



Bannock County Comprehensive Plan

PHASE 2: INTEGRATE

SCOUTING
THE FUTURE



BANNOCK COUNTY 2040

Scouting the Future: Bannock County 2040

This report was produced for Bannock County with assistance from J-U-B Engineers, Inc. and Agnew::Beck Consulting, Inc.



OTHER J-U-B COMPANIES

Table of Contents

- INTEGRATE**..... 3
- Vision Statement, Where we are Today, Desired Future & Goals** 3
 - Vision Statement**..... 3
 - Where we are Today, Desired Future & Goals**..... 3
- Public Involvement** 4
 - At-a-Glance**..... 4
 - Contractor/Developer/Builder Workshop** 4
 - Bannock County Commissioner’s Update**..... 4
 - Advisory Committee Meeting No. 3** 4
 - Public Online Survey** 5
- NEXT STEPS** 6

APPENDICES

- Appendix A – Draft Comprehensive Plan Document
- Appendix B – Development/Contractor’s Meeting Notes
- Appendix C – Bannock County Commissioner’s Update PowerPoint Presentation
- Appendix D – Advisory Committee Meeting No. 3 Notes
- Appendix E – Public Online Survey Summary

INTEGRATE

The purpose of the Phase 2: INTEGRATE process was to build upon what was learned in Phase 1 (GATHER & UNDERSTAND) and develop a vision statement, goals, and draft maps.

Vision Statement, Where we are Today, Desired Future & Goals

Vision Statement

The following vision statement resulted from a robust public input process which included input from Advisory Committee members, developers and builders, with final changes reflected in blue bold text from the most recent public survey:

Bannock County will...

- Be an economically-diverse and economically-vibrant county providing services to encourage sustainable, sensible development **while enhancing the rural and agricultural character of the county**;
- Protect and enhance residents' quality of life;
- Responsibly manage, **conserve and protect** and maximize benefits of its natural resources and areas for current and future residents; and
- Operate a responsive, proactive and transparent government that works in partnership with cities, tribes and other jurisdictions within the County for mutual benefit and toward shared goals.

Where we are Today, Desired Future & Goals

The project team developed a customized Draft Comprehensive Plan document organized by goal areas/chapters to fit the needs and themes of Bannock County as shown below.

Once the plan structure was developed, content including 'Where we are Today' (existing conditions), 'Desired Future' and 'Goals' was developed for each goal area/chapter. These elements were then refined by the Advisory Committee and the public. The resulting **Draft Comprehensive Plan Document outline** is attached in **Appendix A**.

GOAL AREAS/CHAPTERS	
1. Growth Land Use Population Housing	4. Economic Vitality Economic development Economic Benefits of Agriculture
2. Recreation and Open Space Recreation Special Areas or Sites	5. Transportation Transportation Public Airport Facilities
3. Sustainability Natural Resources Community and Sustainable Design Hazardous Areas	6. Public Services School Facilities Public Services, Facilities and Utilities National Interest Electric Transmission Corridors

Public Involvement

At-a-Glance

Public Outreach Activities

- Contractor/Developer/Builder Workshop
- Bannock County Commissioner's Update
- School District Meeting
- Advisory Committee Meeting No. 3
- Public Online Survey

Public Outreach Methods & Advertising

- Social media outreach (utilizing County partners' pages)
- Press Release
- Email to all County staff
- Flyers displayed at high-traffic community locations

Contractor/Developer/Builder Workshop

With contractors, developers and builders playing a large role in county development and growth, a meeting was held on February 26, 2019, with individuals in the industry to gather input and receive direction on open space, Areas of City Impact (ACI), and the Future Land Use Map (FLUM). Key themes are outlined below.

Development/ Contractor's Meeting Notes are attached in *Appendix B*.

1. **Open Space** – Developers, contractors and builders are more than happy to provide open space; however, simply requiring 50% open space with no specific purpose or use is not feasible. Suggestions for reducing the open space percentage and increasing the value and usability of the open space was presented as a solution.
2. **Area of City Impacts** – In general, participants felt that ACI areas are too large, as they do not seem to accurately reflect geographic areas that would truly develop and be serviced within 20 years by the respective cities. Further, it was suggested to encourage annexation of developments within ACI's rather than allowing unincorporated areas to develop within the county's jurisdiction while water and sewer services are being provided by a city. Simplifying and clarifying the county's role of ACI area development while realistically setting ACI boundaries will be key in achieving these goals.
3. **Future Land Use Map** – Basic framework and guidance included being cognizant of common ownerships and parcel lines when assigning future land use designations on the FLUM.

Bannock County Commissioner's Update

On April 9, 2019, the project team presented an update to Bannock County Commissioners to summarize the outcomes of Phase 1 and to inform them of activities planned for Phase 2. The Commissioners were supportive of the process and encouraged continued updates as the plan moves forward. The **Bannock County Commissioner's Update PowerPoint Presentation** is attached in *Appendix C*.

Advisory Committee Meeting No. 3

On April 18, 2019, the Advisory Committee participated in an interactive workshop to provide input on the draft vision statement, goals and FLUM. The resulting input and guidance provided is attached in the **Advisory Committee Meeting No. 3 Notes** in *Appendix D*.

Public Online Survey

The Phase 2 Survey was designed to collect input from County residents and stakeholders related to the draft goals, vision and priority areas for the updated Comprehensive Plan. The survey also sought input from the public on ideas for priority projects and actions. The results of this survey are reflected in the County's updated vision and goal statements and will be utilized again in Phase 3 to inform more detailed policies and implementation strategies.

The survey included **25 questions** regarding the draft vision statement, all six of the goal areas/comprehensive plan elements, and priority actions for each goal area. The survey was distributed to County residents through a press release, flyers hung up around the County, social media posts, and via an email to anyone who had indicated interest in hearing more about the plan from past outreach efforts. The survey was open from June 17, 2019 to July 8, 2019 and received **158 responses**. The **Public Online Survey Summary** is attached in **Appendix E**.

Key Themes

1. General support of the vision and goal area language; however, respondents also wanted to see the goals and vision backed up with County initiatives, funding and partner support.
2. The natural environment, including water quality, clean energy wildlife habitats and protected opens spaces, was a major concern for respondents.
3. The urban/rural divide was noted throughout the open-ended responses. Survey respondents want the County to recognize the importance of rural and agricultural lands and take the necessary steps to preserve the rural character of the County in the face of projected growth rates.
4. Desire for bike and pedestrian infrastructure to serve as recreational opportunities and critical transportation connections.
5. Improving transportation connection, flow and services in the County is desired by respondents. Many felt that transportation planning needs to be happening now in preparation for anticipated growth.

NEXT STEPS

This report concludes Phase 2 – *Integrate*, of the planning process. As the final phase, Phase 3 – *Develop* launches, specific policies and implementation strategies will be developed. Input from the Advisory Committee, stakeholders and the public will continue as the plan proceeds through the adoption process.

Update Draft Comprehensive Plan Document & Maps

1. Develop policies
2. Identify implementation strategies
3. Future Land Use Map using the guiding principles developed in Phase 2 and refine with input from the Advisory Committee, County department staff and the public
4. Parks, Trails and Recreation map using input from Phase 2 and ongoing input from the Advisory Committee, County department staff and the public
5. Open Space/Natural Resources map as a tool to protect and enhance areas throughout the county

Public involvement/stakeholder input in Phase 3

1. County department workshop or survey
2. Hold two final Advisory Committee Meetings – the first meeting to review draft policies, implementation strategies and maps; and the final meeting to prioritize goals and fine-tune key elements of the Draft Comprehensive Plan
3. Conduct an open house where the public can review and provide input on the Draft Comprehensive Plan elements
4. Provide update to the Bannock County Planning and Development Council and Board of County Commissioners
5. Continue engagement with county department staff

APPENDIX A

DRAFT COMPREHENSIVE PLAN
DOCUMENT

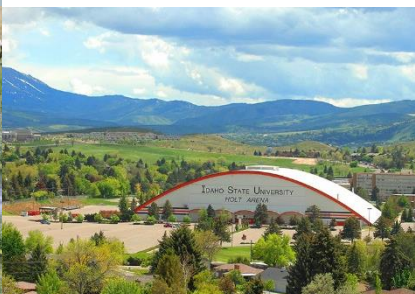


SCOUTING THE FUTURE



BANNOCK COUNTY 2040

DRAFT COMPREHENSIVE PLAN DOCUMENT July 2019



Scouting the Future: Bannock County 2040

This report was produced for Bannock County with assistance from J-U-B Engineers, Inc. and Agnew::Beck Consulting, Inc.



THE LANGDON GROUP
a J-U-B Company



GATEWAY MAPPING INC.
a J-U-B Company

OTHER J-U-B COMPANIES



Table of Contents

VISION STATEMENT

Bannock County will...

- Be an economically-diverse and economically-vibrant county providing services to encourage sustainable, sensible development while enhancing the rural and agricultural character of the county;
- Protect and enhance residents' quality of life;
- Responsibly manage, conserve and protect and maximize benefits of its natural resources and areas for current and future residents; and
- Operate a responsive, proactive and transparent government that works in partnership with cities, tribes and other jurisdictions within the County for mutual benefit and toward shared goals.

GOAL AREAS/CHAPTERS

1. Growth

Land Use
Population
Housing

2. Recreation and Open Space

Recreation
Special Areas or Sites

3. Sustainability

Natural Resources
Community and Sustainable Design
Hazardous Areas

4. Economic Vitality

Economic development
Economic Benefits of Agriculture

5. Transportation

Transportation
Public Airport Facilities

6. Public Services

School Facilities
Public Services, Facilities and Utilities
National Interest Electric
Transmission Corridors

Chapter 1: Growth Overview

Where We Are Today

Land Use



Bannock County is largely agricultural and low density residential as most urban development occurs within ACI (Area of City Impact) areas. Some land use and public service conflicts arise with urbanizing areas as development occurs within the unincorporated area of Bannock County within ACI's. Proposed ACI area increase requests from municipalities often reflect large areas that frequently surpass the city's ability to serve that area within a 20-year timeframe.

Population

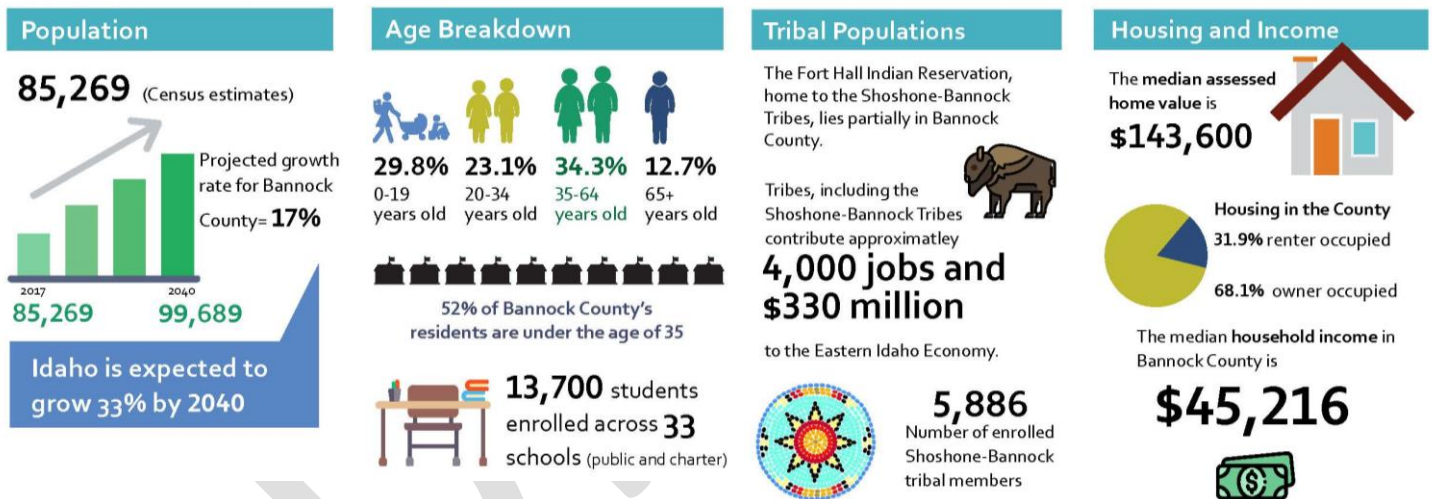


The BTPO (Bannock Transportation Planning Organization) Demographics Technical Report displays that Bannock County will experience a 4-5% increase in population every five years, bringing the County to approximately 99,689 residents by 2040.

Housing



There are currently 33,272 housing units within Bannock County. Bannock County has a median assessed home value of \$143,600. Approximately 68.1% of all housing within the County is owner-occupied.



Desired Future

Bannock County desires to improve its coordination with municipalities when assigning future land use designations, considering Comprehensive Future Land Use Map amendments and approving land use applications within ACI's. Bannock County will closely review requests by municipalities for ACI area increases to ensure the area can be reasonably served, particularly as Bannock County reduces development activity within unincorporated areas of the county within ACI's. Population growth should largely occur within urban areas, with Bannock County primarily accommodating agricultural and rural lifestyles within the county.

Growth *Goals, Policies, Implementation*

Goal 1.1

Direct and manage County development in a manner that is fiscally responsible and aligns with County standards.

- Policy

Goal 1.2

Encourage urban development, revitalization and infill projects within ACI areas containing current or planned utility services.

- Policy

Goal 1.3

Plan collaboratively with surrounding governments for development that is beneficial and compatible with surrounding ACI areas and rural agricultural areas.

- Policy

Goal 1.4

Enhance the rural environment and character of the county by providing diverse rural-living options within the county.

- Policy

Table 1.1 – Implementation: Growth

Timing	County Projects	County Initiatives/Programs	Developing Within the Community	Lead Department
<ul style="list-style-type: none"> ▪ 0-5 years ▪ 5-10 years ▪ 10-20 years 	<ul style="list-style-type: none"> ▪ Upcoming or planned County projects pertaining to the chapter 	<ul style="list-style-type: none"> ▪ Grants, funding programs to be utilized, etc. 	<ul style="list-style-type: none"> ▪ Outline any and all stipulations for new or incoming developments 	<ul style="list-style-type: none"> ▪ Identify Lead Department

- Holding Place – Future Land Use Category Table that coincides with FLUM – names, descriptions, colors, pictures
- FLUM

Chapter 2: Recreation and Open Space *Overview*

Where We Are Today



Recreation

Recreation is a well-loved attraction in Bannock County for residents and visitors, alike. Recreational businesses and tourism are significant economic drivers for the region, generating an estimated \$XXX annually. Bannock County’s numerous recreational opportunities include more than 50 miles of summer trails, and 250 miles of winter trail, and over 50 parks providing approximately 315 acres of parkland managed by the eight incorporated cities in the County. Spring and summer recreation are supported by 42 public campgrounds and abundant opportunities for camping, hiking, fishing, hunting and other forms of wilderness recreation. Winter recreation includes skiing, snowshoeing, snowmobiling at the Pebble Creek Ski Resort, the East Fork Mini Creek Nordic Ski Center and throughout designated areas of Forest Service and BLM owned lands. In 2015, the Portneuf Health Trust donated an 80-acre wellness complex to Bannock County, which provides multi-use sports fields, an amphitheater, outdoor swimming and fishing opportunities and spaces for outdoor events and gatherings.



Special Areas and Sites

Open lands and trails are an important aspect of Bannock County’s identity and culture. Over 35% of the land in the County is federally or state management land, much of which is protected forested areas. Recreation opportunities in the area include Lava Hot Springs, Pebble Creek Ski area, campgrounds, RV parks and trails and greenways. The Portneuf River and Greenway in Pocatello serves as a concentrated area of recreational activity with over 16 miles of trails and 37 proposed projects including parks, trailheads, and cultural/historical monuments. Bannock County receives a significant amount of passthrough visitation of those heading to Yellowstone National Park, Teton National Park, and other regional destinations. Additional recreational opportunities located on the Fort Hall Indian Reservation include open space, hunting and fishing grounds, water access and other natural resources. Bannock County is home to numerous sites of historical and archeological significance, including 29 sites and structures on the National Register of historic places, the Fort Hall Trading Post Archeological site and Oregon Trail markers. Wildlife and wilderness corridors and zones, including the 3,104-acre Portneuf Wildlife Management Area, are an important part of Bannock County’s identify and recreation culture.

Desired Future

Preserving existing and creating new *usable* open and recreational spaces through expanded pathway and trail systems is a top priority. Supporting local businesses and residents in capturing more of the economic benefit of visitation is of additional interest, while balancing existing residents’ access and opportunities. Bannock County seeks to protect, preserve and enhance open space opportunities. Bannock County also aims to capture the economic benefit of tourism from visitors who are on their way to other regional attractions.

Recreation and Open Space *Goals, Policies, Implementation*

Goal 2.1

Establish a County-wide plan of connected system of pathways, trails and trailhead improvements.

- Policy

Goal 2.2

Create a manageable County parks system.

- Policy

Goal 2.3

Encourage development of a connected network of open spaces for recreational and functional uses aligned with natural resource sustainability (i.e. wildlife protection, habitat conservation).

- Policy

Goal 2.4

Support efforts to increase economic benefits from recreation.

- Policy

Goal 2.5

Support the development and ongoing management of public recreation facilities that promote healthy and active lifestyles.

- Policy

Table 2.1 – Implementation: Recreation and Open Space

Timing	County Projects	County Initiatives/Programs	Developing Within the Community	Lead Department
<ul style="list-style-type: none"> ▪ 0-5 years ▪ 5-10 years ▪ 10-20 years 	<ul style="list-style-type: none"> ▪ Upcoming or planned County projects pertaining to the chapter 	<ul style="list-style-type: none"> ▪ Grants, funding programs to be utilized, etc. 	<ul style="list-style-type: none"> ▪ Outline any and all stipulations for new or incoming developments 	<ul style="list-style-type: none"> ▪ Identify Lead Department

- Holding Place – Parks & Trails Map
- Open Space Map

Chapter 3: Sustainability Overview

Where We Are Today



Natural Resources

Bannock County contains nearly 262,000 acres of federal and state lands with 213,414 acres being Federal land and 48,355 acres being State land. The Lower Portneuf Valley Aquifer is located within Bannock County and is the only source of drinking water for the Cities of Pocatello, Chubbuck, and north Bannock County. The Portneuf River extends approximately 97 miles and is notably one of the most important natural resources within the county, offering the potential for community, natural, and economic opportunities to adjacent areas. The Portneuf River is fed by approximately 900 miles of intermittent streams and over 550 miles of perennial streams. In addition to the Portneuf River, Bannock County has a multitude of other natural water features including the American Falls Reservoir and Lava Hot Springs. Lastly, according to the Soil Survey of Bannock County Area, Idaho, almost 11 percent of the survey area meets the requirement for prime farmland.



Community & Sustainable Design

Design patterns within Bannock County primarily aligns with rural and agricultural development. There is a current standard that requires at least 50% of a parcel and/or development be retained as open space, resulting in unimproved areas that do not always serve intended purposes for open space.



Hazardous Areas

With the abundance of agricultural acres and natural resources present within Bannock County, there is an unavoidable potential for hazards to occur. Such hazards include wildfires and flooding depending on the time of year. The 2015 *Bannock County Multi-jurisdictional All Hazard Mitigation Plan* outlines hazards, mitigation measures (including specific projects) for fire, flooding, drought, hazardous materials, terrorism, disease, rodents, weather, dam failure, avalanches and nuclear events. Additionally, the Idaho Department of Environmental Quality's Facility Mapper displays three brownfields sites, with one located in the City of Downey and the two remaining sites located in the City of Pocatello.

Desired Future

Bannock County desires to manage and protect the benefits of natural resources for generations to come. Community design patterns should play a key role in protecting and enhancing natural resources. Creating smooth transitions from urban to rural county areas, providing connectivity, recreation opportunities and preserving open space with a purpose and function will enrich quality of life within Bannock County. Proactive implementation of projects identified the 2015 *Bannock County Multi-jurisdictional All Hazard Mitigation Plan* will provide an improved and safer environment within the community.

Sustainability *Goals, Policies, Implementation*

Goal 3.1

Maintain clean water by protecting aquifers, surface waters, drinking water sources, floodplains, waterbodies, streams, rivers and community, municipal and domestic wells.

- Policy

Goal 3.2

Encourage the protection of desirable natural ecosystems, wildlife habitats, recreational connections and agricultural lands.

- Policy

Goal 3.3

Evaluate the role and function of future open space areas to improve and enhance connectivity, recreation opportunities, habitat connectivity, open spaces and natural resources.

- Policy

Goal 3.4

Ensure citizens are informed and engaged in decisions about the incorporation of sustainability efforts of the natural resources within the county.

- Policy

Goal 3.5

Implement priority hazard mitigation projects aimed at reducing or preventing loss of life, property, environmental resources or wildlife resulting from natural or human-caused hazards.

- Policy

Table 3.1 – Implementation: Sustainability

Timing	County Projects	County Initiatives/Programs	Developing Within the Community	Lead Department
<ul style="list-style-type: none"> ▪ 0-5 years ▪ 5-10 years ▪ 10-20 years 	<ul style="list-style-type: none"> ▪ Upcoming or planned County projects pertaining to the chapter 	<ul style="list-style-type: none"> ▪ Grants, funding programs to be utilized, etc. 	<ul style="list-style-type: none"> ▪ Outline any and all stipulations for new or incoming developments 	<ul style="list-style-type: none"> ▪ Identify Lead Department

- **Open Space Map**

Chapter 4: Economic Vitality *Overview*

Where We Are Today



Economic Development

Bannock County has a median household income of \$45,216, which is comparable to that of Power County; however, the median household income is less than other surrounding counties, aside from Oneida County, and lower than Idaho as a whole. Bannock County strives to create workforce development opportunities where possible and is supported in this by Idaho State

University and the University of Idaho Extension offices, located within the County. Bannock County has over 32,000 employed residents. Key industries outside of Bannock County that provide jobs to Bannock County residents and create housing and transportation demands within Bannock County include, but are not limited to, the Idaho National Laboratory (INL), Simplot, Premier Technology, and various mining companies in and around Caribou County. Emerging industries that may choose to locate in areas similar to Bannock County (due to low cost of living) include high-tech companies with Artificial Intelligence (i.e. smart technology) capabilities. This trend may also result in increased opportunities for home-based businesses.

Top employment industries by percent:



Office and Administrative
16.2%



Sales and Related Occupations
10.3%



Food Prep and Service Related
9.8%



Education, Training and Library
9.5%



Healthcare
6.5%

Five Largest Employers

1. Idaho State University
2. Pocatello School District
3. Portneuf Medical Center
4. ON Semiconductor, Inc
5. City of Pocatello

Five Highest Paying Industries

1. Architecture/Engineering
2. Management
3. Healthcare
4. Computer/Mathematical
5. Legal Occupations

Economic Benefits of Agriculture

There are approximately 300,000 acres of existing agricultural lands in Bannock County that produce over \$54,000,000 of agricultural produce annually. From the year 2007 to 2012, the number of farms and the size and acres of farms within Bannock County have decreased, while the efficiency of farming measures having drastically increased as the revenue accrued has nearly doubled.



Bannock County has:
213,414 acres of Federal land
48,355 acres of State land



Average Revenue per farm increased
81% between 2007 and 2012.

There are **295,000** acres of farmland in Bannock County and wheat for grain is the most produced crop.



Desired Future

Economic development is a top priority for the County. There is a desire to see economic opportunities including higher paying wages, workforce trainings and advanced education grow as the County population grows. The County wants to continue to support development of commercial areas within incorporated cities. Industrial, manufacturing and high-tech industry uses should be considered outside of city limits where appropriate. The County and residents have indicated a strong desire to maintain their agricultural heritage and a continued support for local food production.

Economic Vitality *Goals, Policies, Implementation*

Goal 4.1

Ensure County policies, services and systems support and facilitate business attraction and economic development efforts.

- Policy

Goal 4.2

Support the development of a skilled, talented and trained workforce and increase access to livable wage jobs and higher-paying job opportunities.

- Policy

Goal 4.3

Promote preservation of and benefit from sustainable agricultural activities, agribusinesses and compatible home-based businesses.

- Policy

Goal 4.4

Support promotion of agricultural business, tourism, outdoor recreation and responsible natural resource management as economic drivers in the County.

- Policy

Goal 4.5

Encourage businesses and developments to incorporate active lifestyle elements in their projects and activities to enhance the well-being and health of the workforce and residents.

- Policy

Table 4.1 – Implementation: Economic Vitality

Timing	County Projects	County Initiatives/Programs	Developing Within the Community	Lead Department
<ul style="list-style-type: none"> ▪ 0-5 years ▪ 5-10 years ▪ 10-20 years 	<ul style="list-style-type: none"> ▪ Upcoming or planned County projects pertaining to the chapter 	<ul style="list-style-type: none"> ▪ Grants, funding programs to be utilized, etc. 	<ul style="list-style-type: none"> ▪ Outline any and all stipulations for new or incoming developments 	<ul style="list-style-type: none"> ▪ Identify Lead Department

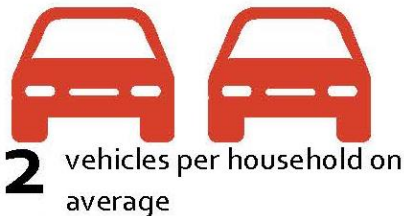
Chapter 5: Transportation Overview

Where We Are Today



Transportation

Bannock County plans for the transportation system together with the Downey-Swan Lake Highway Department. The Bannock County Road and Bridge Department is responsible for maintaining 300 miles of paved roadways and 166 miles of unpaved roadways within unincorporated areas of the County. The primary elements of the 2011 Bannock County Transportation Plan include the functional classification system, project priorities and roadway design standards. The Bannock County Transportation Planning Organization (BTPO) is responsible for regional transportation planning in the North County cities (Pocatello and Chubbuck and associated ACIs). The Union Pacific Railroad Company is the sole rail system within the County. Public transportation services provided through the Pocatello Regional Transit (PRT) include fixed bus routes and commuter and charter services. PRT is also a ticket agent and stop location for Greyhound and the Salt Lake Express. Additionally, freight is a largely utilized transportation method within Bannock County as there are over 15 different freight companies located throughout the County. Major transportation corridors maintained by the Idaho Transportation Department (ITD) include I-86, I-15, US 95, US 30 and US 89. The Union Pacific Railroad operates the rail line that runs south along Highway 91 through the County. This rail corridor facilitates movement of freight and the rail company retains a large rail yard and land holdings within Pocatello.



compared to: **21 mins** Bingham County

21 mins Twin Falls County



Public Airport Facilities

There are three private airports (Lava Hot Springs Airport, Skyline Airport, and Portneuf Medical Center Heliport) and one public airport (Downey-Hyde Memorial Airport) located within Bannock County. There are larger regional airports, such as the Pocatello Regional Airport, located within ACI areas that are city-owned and unassociated with the County.

Desired Future

Bannock County desires to continue to build a safe and efficient local and regional transportation system that is cohesive throughout the County and with surrounding ACI areas. The county will strive to continue to work with partner agencies on targeting resources towards transportation facilities that facilitate mobility between communities, key employment locations and recreation areas.

Transportation *Goals, Policies, Implementation*

Goal 5.1

Work collaboratively internally and with partnering and neighboring jurisdictions to maintain an efficient and safe local and regional transportation system.

- Policy

Goal 5.2

Implement multi-modal transportation alternatives to support walking, biking, public transit and freight movement throughout the County.

- Policy

Goal 5.3

Ensure that all urban and rural roadway systems meet applicable standards and current and future needs for the community.

- Policy

Goal 5.4

Integrate land use and transportation planning when reviewing future development to ensure that it aligns with community and regional transportation goals throughout the County.

- Policy

Goal 5.5

Consider school-related and education-based transportation needs in land use and transportation decisions.

- Policy

Goal 5.6

Support public and private airports throughout Bannock County.

- Policy

Table 5.1 – Implementation: Transportation

Timing	County Projects	County Initiatives/Programs	Developing Within the Community	Lead Department
<ul style="list-style-type: none"> ▪ 0-5 years ▪ 5-10 years ▪ 10-20 years 	<ul style="list-style-type: none"> ▪ Upcoming or planned County projects pertaining to the chapter 	<ul style="list-style-type: none"> ▪ Grants, funding programs to be utilized, etc. 	<ul style="list-style-type: none"> ▪ Outline any and all stipulations for new or incoming developments 	<ul style="list-style-type: none"> ▪ Identify Lead Department

Chapter 6: Public Services *Overview*

Where We Are Today



School Facilities

Bannock County is home to two school districts (Pocatello #25 and Marsh Valley #21), representing 20 primary schools and 13 secondary schools. The Pocatello/Chubbuck School District #25 and the Marsh Valley School District #21 utilizes buses operated by the Idaho Transportation department to provide busing services to students who live more than 1.5 miles from school, including students who reside in unincorporated Bannock County. There are two post-secondary schools operating in Bannock County, Idaho State University and a University of Idaho Extension campus. These two post-secondary schools provide lifelong learning opportunities to the region and help promote an educated and skilled workforce.



Public Services, Facilities and Utilities

In unincorporated areas and in towns, Bannock County provides public services including roads and bridges (except where roads are privately maintained), landfill, jail, courts, ambulance, County Fairgrounds (north and south), planning, code enforcement, indigent services, emergency services, groundwater, mosquito abatement, public works, veterans' services and weed control. The Sheriff's Department also patrols the unincorporated areas and small towns, with a core purpose of protecting the safety and welfare of citizens and providing homeland security. Bannock County's incorporated cities generally provide urban services including, but not limited to water and sewer, stormwater management, police, paved urban streets and sidewalks, parks and recreation, recreational trails, transit, libraries, and cultural facilities like museums. The various fire districts provide fire protection services. Semi-private utility companies provide electricity, telecommunications, and internet services *(see Appendix X for full descriptions of all County-provided services)*.



National Interest Electric Transmission Corridors

Bannock County falls into the Northern Tier Transmission Group (NTTG), and according to the 2018 Annual U.S. Transmission Data Review, there are no designated national interest electric corridors within Bannock County. Idaho Power's 2008 Eastern Idaho Electric Plan identifies an existing source station, a 46V transmission line and 138kV transmission line located in northern Bannock County, along with the County exhibiting a peak summer electrical demand of 157 MW.

Desired Future

The County recognizes the importance of educational opportunities and strives to enhance and promote local schools and institutions throughout the County. Bannock County desires to improve county managed public services including facility management, solid waste, public works sheriff's services, courts, election and indigent services and improve services offered to veterans. Bannock County aims to improve their disaster and emergency preparedness plans utilizing best practices and updated monitoring. The County recognizes the importance of improving landfill operations to reduce interference with water systems and aims to eliminate any damaging environmental hazards from County operated facilities.

Public Services *Goals, Policies, Implementation*

Goal 6.1

Coordinate with the Pocatello and Marsh Valley School Districts, as well as private and charter schools to plan for future growth and enhance access and safety.

- Policy

Goal 6.2

Work with institutions of higher education to expand training and workforce development opportunities in Bannock County.

- Policy

Goal 6.3

Expand and support the public service workforce, public utilities, facilities, services and transmission corridors to meet the growing population and future demand in Bannock County.

- Policy

Goal 6.4

Ensure that the County is prepared to respond to emergency situations, natural disasters and other threats.

- Policy

Goal 6.5

Consider locations of current and future utilities (i.e. renewal energy sources, electric, natural gas, data transmission corridors and solid waste facilities) as part of land use planning decisions.

- Policy

Table 6.1 – Implementation: Public Services

Timing	County Projects	County Initiatives/Programs	Developing Within the Community	Lead Department
<ul style="list-style-type: none"> ▪ 0-5 years ▪ 5-10 years ▪ 10-20 years 	<ul style="list-style-type: none"> ▪ Upcoming or planned County projects pertaining to the chapter 	<ul style="list-style-type: none"> ▪ Grants, funding programs to be utilized, etc. 	<ul style="list-style-type: none"> ▪ Outline any and all stipulations for new or incoming developments 	<ul style="list-style-type: none"> ▪ Identify Lead Department

APPENDIX B

DEVELOPMENT/CONTRACTOR'S
MEETING NOTES

SCOUTING
THE FUTURE



BANNOCK COUNTY 2040



Bannock County Comprehensive Plan Development/Contractor's Meeting 2/26/19

Topics of Discussion:

- The Open Space Requirement
- The Area of City Impact (ACI)
- Future Land Use Map (FLUM)

Introduction to the meeting:

Bannock County has had a lot of input from the public about the Comprehensive Plan Update, but would also like to hear from the developer/contractor community. The comprehensive plan will go till the end of the year (2019). Currently, Bannock County is in the “second phase” of updating the plan.

Bannock County wants a balanced approach, which includes:

- Stakeholder engagement throughout the entire process
- Engagement from the people in the room today
- A plan reflective of everyone's goals and views

Topic #1 Open Space

Goals

1. River Access/Greenway Space
2. Federal and State Land Access
3. Sportsman and Recreation Access
4. Connectivity between Open Spaces
5. Natural Resource Protection
6. Incentives for Public Access through Open Space
7. Habitat Corridors/Protection/Scenic Viewing
8. Maximize the Benefit and Have Flexibility - i.e. Public/Private.
9. Natural or Improved Open Space
10. Park Amenities (Property-Specific Depending on Topography, Natural Resources, Availability, etc.)
11. Slope Protection - Prevent/Reduce Erosion

Open Space Discussion Talking Points

- **Open Space Considerations**
 - In general, people are moving to the County to get a bigger building lot. The County Open Space requirements typically results in 50% of each of the residential lots being designated as non-buildable. This results in both open space that is unusable to residents in the subdivision and it hurts the property values of residents by creating large unbuildable tracts of land.
 - About 90% of county must have 50% open space.
 - The grade/topography leads and guides the open space that they use when building. Typically, “open space” ends up being designated because it is located in an area where construction would be difficult; usability of the open space is not a primary consideration.

- Consideration for legal easement for those open spaces - Not every lot has access to a river or BLM land where people like to hunt or go so it's not always a problem, but perhaps a developer or builder could designate open space for access to public lands so people can still have access to the public lands.
 - One potentially significant issue is that open space is often designated on a plat and future land owners don't know that a portion of their property has been designated as open space. So home owners will buy a lot thinking they want to build a barn or a garage, etc. but they can't because it is deemed as open space. It puts the County and the builders in a bind because the survey has to be redone if they want to use that land.
 - There are very few people who would grant public access on their private open space
 - A certain amount of open space is required for each development. It is not necessarily by lot. Typically, the builder/homeowner maintains it, if not the builder, a public agency does or land trust.
 - It is up to the developer where the open space is located.
 - The one negative of having open space is if an individual land owner owns it, then no one can access it because you would be trespassing. You start putting open space in specific lots than the home owners than it puts a legal liability on the home owners.
 - There are two types of tax exemptions – taxed as agriculture ground or a development exemption (undeveloped land).
- **Open Space Opportunities**
 - Quality...not quantity
 - Developers and Contractors expressed a definite preference for changes in Open Space Requirements that would allow developers to improve the usability and quality of their open space in exchange for density bonuses or other incentives.
 - Would rather have less open space but better considerations. The County is looking at getting a better use out of the open space.
 - The County would like the developers to have creativity to use the open space differently depending on the situation and the different lots. There are different circumstances where they could use the open space area and the County wants to see people using that differently depending on the situation (wild life, river access, parks, fish and game, etc.).
 - Incentives - bumping up density of lot in exchange for opening land to the public.
 - Designated trails/pathways can relieve liability for private land owners.

Topic #2: Area of City Impact (ACI)

Goals

1. Reasonable ACI size should reflect true 20-year growth in the area/population
2. Infrastructure availability/proximity
3. Minimize and simplify the County's role in administration in development
4. Encourage annexation of developments within ACI's.

ACI Discussion Talking Points

- ACI Considerations
 - If you have less than the 5 acres than you must connect to city services. If bigger, you could use septic.
 - In general, the City will provide services with annexed lots.

- Chubbuck says that if there are more than three lots in a subdivision than you have to connect to their services.
 - The five-acre rule within the ACI is difficult to work within.
 - It's almost impossible to develop within the ACI because of restrictions.
 - Chubbuck's ACI seems too large
 - Accessibility to the sewer and water.
- **ACI Opportunities**
 - As you get closer to the city you should be able to build a little bit smaller.
 - Builders/developers encouraged to come to public meetings or write formal letters or emails for or when the ACI is going to change.
 - Rather than renegotiate or change their ACI, the better argument would be to have the cities have a map for a 20, 30, 40 + year than they would know how realistic it would be to develop out there. Every time they re-evaluate their ACI than they need to look at their map and regulations again.
 - Lessons Learned – Whitaker Road
 - Look at historical ACI's or where Cities are growing to.
 - Do we want to see more County growth within the ACI? Or do we want to shy away from it? The reality is that we are seeing a lot of growth within Chubbuck.
 - Cost Share the infrastructure- people and the city share the cost for those utilities and sewer. See if everyone can make it work together.
 - “Deferral” agreements for smaller lots for future curb/gutter improvements when larger area is developed.
 - Take a closer look at annexation agreements

Topic #3: Future Land Use Map

Goals

1. North Century -Industrial and Commercial
2. Consider common ownership on parcel lines when assigning designations

FLUM Discussion Talking Points

- Consideration needs to be given to some of the land use north of Century (industrial/commercial)
- Try to avoid lot splits within single property ownerships.
- Look at modifying City designations - the land use has to match the county designation.
- There are a lot of agricultural uses where there used to be agriculture but they really aren't anymore. That is a deterrent to development.

Homework:

We are attaching a current Future Land Use Map that we would like to hear your feedback on. Please print a copy of the map to make notes or use a program like Blue Beam to tell us two things:

- 1.) Which land use designations in the Pocatello and Chubbuck ACIs seem appropriate and should be retained? Mark areas with a star.
- 2.) Which land use designations need to be modified? What would you like to see in the area? Please clearly mark the area on the map and send us specific comments on what you would like to have changed and why it should be changed.

APPENDIX C

BANNOCK COUNTY COMMISSIONER'S
UPDATE POWERPOINT
PRESENTATION

SCOUTING
THE FUTURE





BANNOCK COUNTY 2040




Bannock County Comprehensive Plan

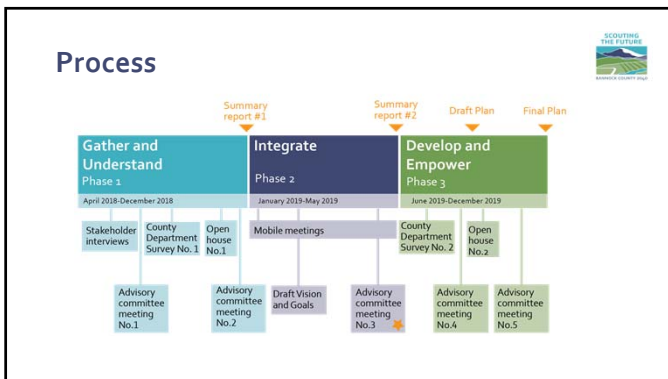
Update to County Commissioners
April 9, 2019

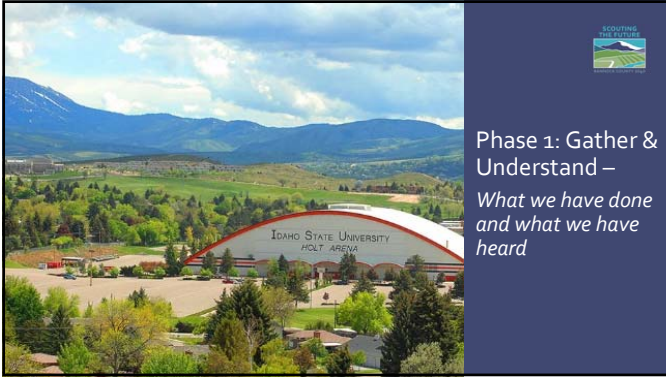



Overview



- Provide an overview of our process
- Report feedback and outcomes from Phase 1
- Review current Comprehensive Plan Vision
- Discuss next steps





What we have done...

Planning Documents and Reports

- Approximately 30 plans and reports from internal/external partners are being used to inform the plan update. Topics included:
 - Land Management, Bike/Ped infrastructure, education, transportation, etc.

Existing Conditions Data

- Statistics and data that best identifies current conditions within the County. Topics included:
 - services, demographics, education, employment, wildlife and natural resources, parks/trails and recreation, protection, transportation, and tribes.
- Data was analyzed and compared to neighboring and/or similar counties to gain a better understanding of the dynamics and trends affecting Bannock County.

What we have done...

Zoning and Land Use Analysis

- Displays the intent, character, location, allowed uses, and density and intensity for all current future land use designations in Bannock County

RECOMMENDATIONS:

- Reconcile and clarify discrepancies in the current zoning and future land use descriptions.
- Revisit what may occur/what the intent is for unincorporated areas inside ACI's vs. outside ACI's and resolve conflicts between City and County future land use designations
- Use the Comprehensive Plan to provide clarity on the County's intent in **Rural Residential** areas as they develop.
- Evaluate whether the **Multiple Use** future land use designation should remain or be eliminated.
- Evaluate effectiveness and intention of **Open Space** requirement

What we have heard...



Situational Assessment (June/July 2018)

- In-person interviews with over a dozen key stakeholders
- Key findings
 - Developing a plan that balances the needs, interests and concerns South County vs. North County
 - Updating the plan to find a mutually beneficial way to address the issue of city vs. county needs (infrastructure specifications) in a community's ACI
 - Septic and water quality concerns with growth and development

Advisory Committee Meetings (September & December 2018)

- County Vision, Asset Mapping, SWOT Analysis, Topical Discussions

What we have heard...



Public Outreach (external)

- Promotion & Advertisement (newspaper, parade, social media, flyers)
- Public Workshop No. 1 & 3P Visual Public Comment Map
 - Approximately 70 attendees
 - Nearly 200 comments, emails and letters
 - <http://3pvisual.com/Projects/bannockcompplan/Comments.aspx>

County Department Survey (internal)

- Responses from all Departments



Feedback & Key Themes



Key Themes from the Public

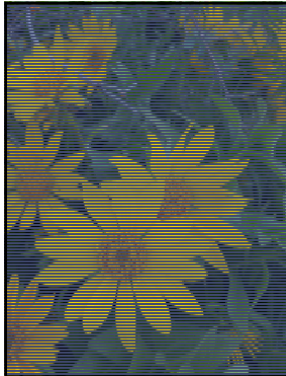


- South County vs. North County – develop a plan that balances the needs and interests of both areas
- Cooperative approach to addressing needs and priorities of Cities and County within ACI and Tribe.
- Management of the relationship between residential development and water quality in the county
- Recreation and Trails – preserving the landscape while planning for growth and connectivity
- Future Land Use designations to enhance smart economic development and growth

Key Themes from the Department Survey



- Key themes from the County department survey indicated a need for:
 - Additional County staff and office space as the County continues to grow.
 - Workforce development and educational opportunities within the county.
 - A focus on developing and maintaining key infrastructure including roads, bridges and the landfill.
- Respondents indicated that the top priorities for the County over the next five years include:
 - Workforce development and retention.
 - Sustainable finances and budgets.
 - Adapting to thrive with new development and regional growth.



Comprehensive Plan Vision



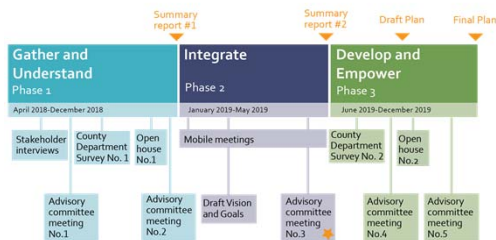
Vision Statement



Bannock County will be an economically-diverse and economically-vibrant county providing services to encourage sustainable, sensible development; protect and enhance residents' quality of life; responsibly manage and maximize benefits of its natural resources and areas; and operate a responsive, transparent government that works in partnership with cities, tribes and other jurisdictions within the County for mutual benefit and toward shared goals.



Process – Public Outreach



APPENDIX D

ADVISORY COMMITTEE MEETING NO.
3 NOTES

SCOUTING
THE FUTURE



BANNOCK COUNTY 2040





Meeting Notes Advisory Committee Meeting No. 3

Thursday, April 18, 2019, 2:00 p.m. – 3:30 p.m.

McCammom City Hall - 802 Front St., McCammon, ID 83250

Introductions & Process

Following introductions and a brief overview of the comprehensive planning process and timeline, the Advisory Committee was updated on the public outreach efforts conducted thus far. The Advisory Committee then participated in an information gathering activity and discussed the draft Vision Statement, Desired Future, Goals and Future Land Use Map.

Future Land Use Map

Input from Committee

Chubbuck

- Need for designations allowing residential lots of 1-3 acres on septic
- Need for higher density residential in areas of ACI where urban services can be extended
- Existing industrial and light industrial uses need to be protected and perhaps expanded

Pocatello

- Need for higher density (Suburban Residential) areas in ACI where urban services can be extended
- Need for designations allowing residential lots of 1-3 acres on septic
- Open space area protection discussed for portions of south Pocatello
- Light industrial areas need to be evaluated and protected

Inkom

- Rural Residential FLUM designations in ACI should be based on topography/develop-ability
- Rural Residential designations desired for 1-3 acre lots inside and outside ACI

McCammom

- Rural Residential FLUM designations inside ACI should be based on topography and existing land uses

Lava

- Unique area within Bannock County that needs its own FLUM designations
- Development in Lava Hillside areas was discussed as warranting a FLUM designation

Downey

- Discussion on restricting residential permits to ag related residential uses to protect farmland in Ag areas

- Area north of Downey inside ACI with existing water, power, and rail may warrant a Light Industrial FLUM designation

Basic Principles Guiding Future Land Use Map Update

Zoning

- Current Comprehensive Plan designations that correlate with existing zoning will be retained.
 - Ex.: areas currently zoned MU (Mixed Use) will keep their MU Comprehensive Plan designation.

Residential Density

- Changes in the density of residential FLUM designations will be based on surrounding land uses and availability of urban services.
 - Ex.: areas in the ACI with proximity to urban services will be considered for higher density residential FLUM designations and areas in the ACI that are in close proximity to 1–3 acre parcels on well and septic will be considered for residential designations allowing for 1-3 acre parcels.

Commercial & Industrial

- Changes in the intensity of commercial and industrial FLUM designations will be based on surrounding land uses and existing and planned infrastructure including urban services and roadways.
 - Ex.: an area located in an ACI that is adjacent to urban services and an Arterial road may be considered for a commercial or light industrial FLUM designation

Hillside/Foothill Areas & Natural Resources

- Natural features such as topography, open space, and rivers can guide FLUM updates of undeveloped areas
 - Ex.: areas with slopes over 15% may be designated as Hillside Areas with special standards for development

Vision Statement, Desired Future & Goals

The following matrix represents the information presented to Advisory Committee members, their comments, and a response indicating whether the input resulted in a revision, potential future policy or a topic for future discussion.

Vision – Bannock County will...			
Comments	Revised Vision Statement	Future Policy	For Future Discussion
Be an economically-diverse and economically-vibrant county providing services to encourage sustainable, sensible development;			
Promote the County’s recreational opportunities including, but not limited to, mountain biking and a multitude of outdoor activities.		X	
Protect and enhance residents’ quality of life;			
Access to public trails within one mile of people’s homes.		X	
Responsibly manage and maximize benefits of its natural resources and areas for current and future residents; and			
Need to include the Shoshone-Bannock Tribes		X	
For both current and future residents.	X		
Operate a responsive, proactive and transparent government that works in partnership with cities, tribes and other jurisdictions within the County for mutual benefit and toward shared goals.			
Responsible is good. Proactive also?	X		

Chapter 1 Goals – Growth			
Comments	Revised Goal	Future Policy	For Future Discussion
Goal 1.1 Direct and manage County development in a manner that is fiscally responsible and aligns with County standards.			
Consider conservation easements to protect lands and visuals.		X	
Goal 1.2 Encourage urban development within ACI areas containing current or planned utility services.			
Adopt urban land use and development standards within ACI, whether standards of individual cities or a standalone County code for roads, sewer, water, and sidewalks.			X
Develop within ACI and County to avoid getting too spread out.		X	
Should reduce ACI to areas that could feasibly be developed and public infrastructure effectively and economically extended.			X
Goal 1.3 Plan collaboratively with surrounding governments for development that is beneficial and compatible with surrounding ACI areas and rural agricultural areas.			
Include wording that brings the city governments into the discussion/planning of their respective ACI's.	X		
Goal 1.4 Provide diverse rural-living options within the County.			
Need to encourage development near existing communities.		X	
Recognize that these cities located in south Bannock County differ (sometimes drastically) in terms of needs, wants, etc. from the bigger cities of Pocatello and Chubbuck. Quite often they seem to be left out/behind.		X	X
Chapter 2 Goals – Recreation and Open Space			

Comments	Revised Goal	Future Policy	For Future Discussion
Goal 2.1 Establish a County-wide plan of connected system of pathways, trails and trailhead improvements.			
Needs to include County roads that provide access to public lands.		X	
Work closely with cities here. Greenway networks are being planned and unless coordination occurs, critical exactions could be missed.		X	
Add ‘water trails’ to this list.			X
Standardize connected pathways and trails to NPRA standards – possible assistance in development or maintenance. Should be able to travel by foot/bike from one end of County to the other end.		X	
Developments should require public access to adjacent public lands and coordination for trailheads and parking with all parties.		X	
Goal 2.2 Create a manageable County parks system.			
Parks are probably a better function for cities.			X
School and cities, County Fair Grounds, work together to use open space.		X	
Goal 2.3 Encourage development of a connected network of open spaces for recreational and functional uses aligned with natural resource sustainability			
Maintain wildlife corridors.		X	
Add ‘that support natural resource goals (ed. Water resource protection, habitat connectivity, wildfire risk reduction, etc.)’	X		
Goal 2.4 Support efforts to increase economic benefits from recreation.			
Goal 2.5 Support the development and ongoing management of public recreation facilities that promote healthy and active lifestyles.			

Chapter 3 Goals – Sustainability

Comments	Revised Goal	Future Policy	For Future Discussion
Goal 3.1 Maintain clean water by protecting aquifers, floodplains, waterbodies, and community, municipal and domestic wells.			
Add 'source water' to the end of this.			X
Need to develop a better plan for septic systems (rather than just 5 acres per lot)			X
Add floodplain protection to this list.	X		
Need a coordination plan to manage water resources in the County.		X	
Wellness center to be more open with management and public information.			X
5-acre rule should stand with any variance based on soil nutrient-pathogen studies, 3-D modeling and IDEQ Nitrate priority area restricted.			X
Goal 3.2 Encourage the protection of desirable natural ecosystems, wildlife habitats, recreational connections and agricultural lands.			
Need to have Fish and Game develop a map of high priority wildlife fish habitat areas.			X
Goal 3.3 Evaluate the role and function of future open space areas to improve and enhance connectivity, recreation opportunities, habitat connectivity and natural resources.			
Add habitat connectivity; Open space is stated twice, remove second instance.	X		
In an area of housing shortage, a 50% open space requirement is overly burdensome and consumes developable land.			X
Goal 3.4 Ensure citizens are informed and engaged in decisions about the incorporation of suitability efforts of the natural resources within the County.			
County leadership on natural resource education is needed.			X
Use the Portneuf Soil and Water Conservation District as a resource.		X	
Goal 3.5 Implement priority hazard mitigation projects aimed at reducing or preventing loss of life or property resulting from natural or human-caused hazards.			
Prioritize projects that address multiple risks.		X	

Chapter 4 Goals – Economic Vitality			
Comments	Revised Goal	Future Policy	For Future Discussion
Goal 4.1 Ensure County policies, services and systems support and facilitate business attraction and economic development efforts.			
Economic development is a bigger role of the cities, BDC, and REDI. Support smart growth in cities and smart, wise tax exemptions.		X	
Goal 4.2 Support the development of a skilled, talented and trained workforce with access to higher-paying job opportunities.			
Start training/shop class in high schools again; I believe student interest in construction has dropped due to lack of shop class.		X?	
Goal 4.3 Promote preservation of and benefit from sustainable agricultural activities, agribusinesses and compatible home-based businesses.			
Many communities only give lip service to agriculture preservation. Will need good policy and cities cooperation.		X	X
Small farms near Chubbuck and by Downey provide small ag. Business opportunities for farmer's market.		X	
Goal 4.4 Support promotion of tourism, outdoor recreation and responsible natural resource management as an economic driver in the County.			
Tourisms and outdoor recreation is mandatory for this area. We have both in this area but don't promote it.		X	
Outdoor recreation can be a bid attractor to high-tech and small industries that area mobile. Boise is doing this well with trails, mountain biking, river sports. etc.		X	
Goal 4.5 Encourage businesses and development to incorporate active lifestyle elements in their projects and activities to enhance the well-being and health of the workforce and residence.			

Chapter 5 Goals – Transportation			
Comments	Revised Goal	Future Policy	For Future Discussion
Goal 5.1 Work collaboratively internally and with partnering and neighboring jurisdictions to maintain an efficient local and regional transportation system.			
Investigate railway system from south county. Possible Joint venture with other counties.			X
Goal 5.2 Implement multi-modal transportation alternatives to support walking, biking, and public transit and freight movement throughout the County.			
Greater emphasis on bike paths/trails/systems to encourage that form of transportation.		X	
Goal 5.3 Ensure that all urban and rural roadway systems meet applicable standards and current and future needs for the community.			
Current and future needs. Current County ROW exaction will make increased road capacity updates expensive and time consuming.	X		
Goal 5.4 Integrate land use and transportation planning when reviewing future development to ensure that it aligns with community and regional transportation goals throughout the County.			
What about South County?	X		
Goal 5.5 Support public and private airports throughout Bannock County.			
Utilize existing airports for corporate/recreational use. Integrate use into tourism supports.		X	

Chapter 6 Goals – Public Services			
Comments	Revised Goal	Future Policy	For Future Discussion
Desired Future			
As most cities in south county utilize County Sheriff services, somehow include cities input and needs in assessing and planning for future law enforcement needs.		X	
Look into regional landfills to reduce long term liability.		X	
Goal 6.1 Coordinate with the Pocatello and Marsh Valley School Districts, as well as private and charter schools, to plan for future growth and enhance access and safety.			
For an objective: Reduce busing and other transportation needs when siting schools.		X	
Consolidate the two school districts.			X
Goal 6.2 Work with institutions of higher education to expand training and workforce development opportunities in Bannock County.			
Goal 6.3 Expand and support public utilities, facilities, services and transmission corridors to meet the growing population and future demand in Bannock County.			
Goal 6.4 Ensure that the County is prepared to respond to emergency situations, natural disasters and other threats.			
Don't build in floodplains and on steep slopes.		X	X
Incorporate cities disaster and recovery plans. Share resources and don't re-create the wheel.		X	
Goal 6.5 Consider locations of current and future utilities (i.e. electric, natural gas, data transmission corridors and solid waste facilities) as part of land use planning decisions.			
Add goal pertaining to landfill management and improvement. It's mentioned in the main statement but not supported by a goal.	X?		

Attachment

- Sign-in sheet

Scouting the Future - Bannock County 2040
 Bannock County Comprehensive Plan Update
 Advisory Committee

Name	Organization	Position	Phone	Email	4/18/2019 Meeting #3
John Regetz	Bannock Development Corporation	Executive Director	(208) 233-3500	john@bannockdevelopment.org	✓
Blaine Newman	Bureau of Land Management (BLM)	Assistant Field Manager	(208) 478-6340	bnewman@blm.gov	
Lonnie Gunter	City of Arimo	Mayor	(208) 241-2642	gunterlonnie@gmail.com	
Devin Hillam	City of Chubbuck	Planning & Development Director	(208) 237-2430 ext. 139	dhillam@cityofchubbuck.us	
Dennis Phillips	City of Downey	Mayor	(208) 897-5342	mayor@downeyidaho.us	
Joel Jolley	City of Inkom	Mayor	(208) 775-3372	inkomladams@cableone.net	
Max Shaffer	City of Inkom	Council Member		maxdshaffer@hotmail.com	
T. Paul Davids, III	City of Lava Hot Springs	Mayor	(208) 776-5820	lavahotspingscity@gmail.com	
Karlene Hall	City of McCammon	Mayor	(208) 221-3515	karlenewhall@gmail.com	✓
Matt Lewis	City of Pocatello	Planning Manager	(208) 234-6190	mlewis@pocatello.us	
Melanie Gygli	City of Pocatello	Planning and Development Director	(208) 234-6583	mgygli@pocatello.us	
Hannah Sanger	City of Pocatello	Science & Environment Administrator	(208) 264-6518	hsanger@pocatello.us	
Becky Abel	Idaho Department of Fish and Game	Environmental Staff Biologist	(208) 236-1246	becky.abel@idfg.idaho.gov	
Chris Peirsol	Idaho Transportation Department	Senior Transportation Planner	(208) 239-3369	Chris.Peirsol@itd.idaho.gov	
Alonzo Coby	Shoshone-Bannock Tribes	Planning Director	(208) 478-3700	acoby@sbtribes.com	
Lori Bell	US Forest Service	District Ranger	(208) 766-5900 589-7927	label@fs.fed.us Lori.Bell@usda.gov	
Melissa Warren	US Forest Service	Field Office Manager	(208) 478-6340	mdwarren@blm.gov	
Sue Skinner	Portneuf Resource Council	Member		suebaru80@gmail.com	
Mike Larkin	Portneuf Resource Council	Chairman	208-705-8912	mlarkinaowski@gmail.com	✓
Mori Byington	Bannock Transportation Planning Org.	Director	(208) 233-9322	mori@bannockplanning.org	✓
Brooks Davis	Shoshone-Bannock Tribes	Technical Services	(208) 242-9274	highdavis@gmail.com	
Steven Smith	Idaho Department of Environmental Quality		(208) 236-6160	steven.smith@deq.idaho.gov	✓
Ron Dykman	Dykman Construction		208-221-3105	ron.dykman@dykmanconstruction.com	✓

Bonnie Hill

847 514-1677

bhill12013@yahoo.com

✓

Paul Andrus

city of Chubbuck

208-237-2430

bandrus@cityofchubbuck.us

✓

Ernie Moser

Bannock County

Commissions

208-251-4541

Emoser@BannockCounty.US

Don Matson

City of Chubbuck

Sr. Planner

208-237-2430

dmatson@cityofchubbuck.us

Aaron Hunsaker

City of McCammon

Council President

208-406-3212

aphunsaker@gmail.com

Mike Ennis

Bannock Development Corp

VP-Business Development

(208) 530-3705

mike@bannockdevelopment.org

MIKE Jaglowski

Bannock County

P&D DEPART

208-236-7230

mjaglawski@bannockcounty.us

Richard Ashcraft

Bannock County



APPENDIX E

PUBLIC ONLINE SURVEY SUMMARY

SCOUTING
THE FUTURE



BANNOCK COUNTY 2040





Bannock County Comprehensive Plan – Public Survey Summary

The Bannock County Comprehensive Plan Phase 2 Survey was designed to collect input from County residents and stakeholders related to the draft goals, vision and priority areas for the updated Comprehensive Plan. The survey also sought input from the public on ideas for priority projects and actions.

The survey was 25 questions long and covered comprehensive plan elements including the vision, all six of the goal areas, and priority actions for each goal area. The survey was distributed to County residents through a press release, flyers hung up around the County, social media posts, and via an email to anyone who had indicated interest in hearing more about the plan from past outreach efforts. The survey was open from June 17, 2019 to July 8, 2019 and received 158 responses.

Survey respondents varied in age, but most respondents were between the ages of 45-64 (53.2%), with 24.5% between 35-44 and 16% over the age of 65. Only 6.3% of respondents were under the age of 34, and no respondents were under the age of 18. Most respondents (83%) have lived in the county for 11 or more years.

Survey respondents lived across the county, closely representing County population densities. 78 % of respondents were from the Pocatello/Chubbuck area, and the remaining 22% of respondents reside throughout the County in communities including Arimo, Downey, Inkom, Lava Hot Springs and McCammon.

This summary highlights major themes and findings from the Phase 2 Bannock County Comprehensive Plan Survey. A full compilation of open ended responses can be found at the end of this summary.

Key Themes and Findings

- Respondents generally supported the vision and goal area language, however open-ended responses indicated that this support was contingent upon County initiative to achieve the goals and vision with action items, funding and support.
- A large segment of respondents were very concerned about protecting and enhancing the natural environment in Bannock County. Specifically, respondents were interested in seeing the County take action to preserve and protect water quality, wildlife habitats and invest heavily into ensuring a renewable energy future for Bannock County.
- The urban/rural divide was noted throughout the open-ended responses. Survey respondents want the County to recognize the importance of rural and agricultural lands and take the necessary steps to preserve the rural character of the County in the face of projected growth rates. Additionally, respondents want the County to take a holistic approach to providing services to all areas in the County as many felt that funding and services were being disproportionately distributed to the Pocatello/Chubbuck Area.
- Respondents want to see bike and pedestrian infrastructure developed in the County to serve as recreational opportunities and critical transportation connections.
- Improving transportation connection, flow and services in the County is desired by respondents. Many felt that transportation planning needs to be happening now in preparation for anticipated growth.

Vision Statements

The County put forth the following vision statement.

Bannock County will...

- Be an economically-diverse and economically-vibrant county providing services to encourage sustainable, sensible development;
- Protect and enhance residents' quality of life;
- Responsibly manage and maximize benefits of its natural resources and areas for current and future residents; and
- Operate a responsive, proactive and transparent government that works in partnership with cities, tribes and other jurisdictions within the County for mutual benefit and toward shared goals.

84% of respondents indicated that they generally felt this vision statement reflected what they wanted to see happen in Bannock County over the next 10 to 20 years. Of the 16% who did not feel this reflected their desires, they indicated the following broad reasons as to why not:

- Not enough emphasis on environmental conservation and protection, particularly around water quality.
- A lack of focus on resident and citizen involvement.
- A lack of focus on rural communities and agricultural protections.
- A lack of specificity and accountability
- Not enough emphasis placed on managing growth and its impacts on the County's communities.

Respondents were asked to provide **specific ideas and suggestions on how to improve the vision statements.**

The following items represent the major themes and topics from these respondents' suggestions.

- Include transparency and accountability as a broad vision for County function.
- Focus on the County's ability to implement these broad vision statements.
- Include language and recognition for all parts of Bannock County including less populated rural areas.
- Environmental protections, conservation and actions could be pulled out as its own statement within the vision.
- Recognize the importance of agriculture as both an economic engine and an important aspect of the County's history.
- Recognize the importance of community and diversity.

Goal Area 1: Growth and Development

Respondents were asked to review and provide input on the following statements.

Goal 1.1 Direct and manage County development in a manner that is fiscally responsible and aligns with County standards.

Goal 1.2 Encourage urban development within areas of City impact (ACI) containing current or planned utility services.

Goal 1.3 Plan collaboratively with surrounding governments for development that is beneficial and compatible with surrounding ACI areas and rural agricultural areas.

Goal 1.4 Provide diverse rural-living options within the County.

71% of respondents felt that the above goal statements related to growth and development would help the County direct growth and development in a positive manner. The following reasons were cited by respondents who did not agree with the statement.

- A lack of focus on revitalizing areas vs. expanding outward.
- Addressing the urban/rural divide and related growth was not included
- Better address where growth and development will be occurring, making it clear to develop Cities and preserve rural/open spaces.
- Expansion of infrastructure is an important part of addressing and managing future growth.
- Some respondents who answered “no” indicated that they did not want to see any new growth or development.

Growth and Development Suggestions for projects and actions.

When asked to leave suggestions for projects and actions related to growth and development, respondents had many suggestions. Here are some of the most frequently mentioned and relevant projects/actions (related to growth and development) presented by survey respondents.

- Economic incentives to revitalize existing urban areas and encourage infill development.
- Keep the five-acre rule to prevent new and expanded nitrate priority areas designated by the IDEQ.
 - Limit the installation of new septic systems.
- Implement “Smart Growth” standards
- Ensure infrastructure and services meet the demands of growing communities.
 - Work to develop fire districts to better support all of Bannock County Communities.
- Ensure access to affordable housing units.
- Promote high density development to protect rural areas and open spaces.
- Make data driven decisions that are based on best practices and past successes.
- Evaluate all growth and development under a framework of sustainability and resilience.

Goal Area 2: Recreation and Open Space

Respondents were asked to review and provide input on the following statements.

Goal 2.1 Establish a County-wide plan of connected system of pathways, trails and trailhead improvements.

Goal 2.2 Create a manageable County parks system.

Goal 2.3 Encourage development of a connected network of open spaces for recreational and functional uses aligned with natural resource sustainability

Goal 2.4 Support efforts to increase economic benefits from recreation.

Goal 2.5 Support the development and ongoing management of public recreation facilities that promote healthy and active lifestyles.

85.6% of respondents felt that the above goal statements related to Recreation and Open Space would help the County provide assessible and sustainable recreation opportunities and protect open spaces in the County. The following reasons were cited by respondents who did not agree with the statement.

- Specific types of parks including dog parks are not included.
- Goal statements could lead to fragmentation of wild places and natural habitats/corridors.
- Wildlife protection is not included.
- A belief that the County should not be providing these types of services and considerations.
- Lack of specificity between recreational development and wildlife/open space protection.

Recreation and Open Space Suggestions for Projects and Actions.

When asked to leave suggestions for projects and actions related to recreation and open space, respondents had many suggestions. Here are some of the most frequently mentioned and relevant projects/actions (related to recreation and open space) presented by survey respondents.

- Create public buy-in for recreation and open space opportunities.
- Prioritize projects that provide access to waterfront areas.
 - Continue to develop the Portneuf river into a recreational waterway, making a point to stop environmental pollutants from entering the waterway.
- Update the open space report that was developed after the last comprehensive plan update.
 - Create a County wide recreation and open spaces map that includes items such as public access lands, fishing locations, and land protected by conservation easements.
- Develop a public open space preservation ordinance
- Identify sensitive natural resources (including wildlife corridors) during recreation and trail planning and adjust implementation accordingly.
- Connected bike and pedestrian trail systems in all parts of Bannock County.
- Preserve undeveloped outdoor access and recreation opportunities. Keeping access to public lands in the face of increased private land ownership and restrictive access points.
- Revitalize and reprogram the Portneuf Wellness center for increased use and utility.
- Promote places for dog friendly recreation.
- Partner with other agencies (BLM, Forest Service, Tribe) to promote the connection and maintenance of outdoor spaces.
- Enforce the elimination of noxious and invasive weeds.

Goal Area 3: Sustainability

Respondents were asked to review and provide input on the following statements.

Goal 3.1 Maintain clean water by protecting aquifers, floodplains, waterbodies, and community, municipal and domestic wells.

Goal 3.2 Encourage the protection of desirable natural ecosystems, wildlife habitats, recreational connections and agricultural lands.

Goal 3.3 Evaluate the role and function of future open space areas to improve and enhance connectivity, recreation opportunities, habitat connectivity and natural resources.

Goal 3.4 Ensure citizens are informed and engaged in decisions about the incorporation of suitability efforts of the natural resources within the County.

Goal 3.5 Implement priority hazard mitigation projects aimed at reducing or preventing loss of life or property resulting from natural or human-caused hazards.

83.6% of respondents felt that the above goal statements would help the County manage and protect natural resources, protect habitats and mitigate natural disasters. The following reasons were cited by respondents who did not agree with the statement.

- Water quality is an important issue with many respondents, they felt this was not incorporated to a large enough degree in the goal statements. For example, include drinking water, surface water and stream flow in goal area 3.1
- Goal area 3.5 prioritizes humans and property over environmental protections and animal lives.
- Include statements regarding addressing existing pollution, industrial pollution and environmental hazards.
- A handful of respondents felt that these statements were disingenuous because of a belief that the County will not act in accordance to these principles/goals. Ensuring implementation will be key to successful planning.

Sustainability Suggestions for Projects and Actions.

When asked to leave suggestions for projects and actions related to sustainability, respondents had many suggestions. Here are some of the most frequently mentioned and relevant projects/actions (related to sustainability) presented by survey respondents.

- Recycling programs that are easy to use and widely implemented.
- Improve enforcement of existing code (burn bans).
- Address the issues with the landfill - potentially find a new location that will not affect the aquifer to the same degree as the existing infrastructure.
- Recognize the impact of human activity and make some areas “human-free” refuges.
- Purchase water rights to ensure strong stream flow in the Portneuf river
- Host public meetings to educate the community regarding sustainability, development expectations and the impacts/capacity of the Cities/County to implement and impact sustainability.
- Work with mines and utilities to ensure they assist/facilitate clean-up and protection activities
- Adopt a groundwater ordinance.
- Ground all decisions with scientific support.
- Work with the Shoshone Bannock Tribe in all sustainability efforts.

Goal Area 4: Economic Vitality

Respondents were asked to review and provide input on the following statements.

Goal 4.1 Ensure County policies, services and systems support and facilitate business attraction and economic development efforts.

Goal 4.2 Support the development of a skilled, talented and trained workforce with access to higher-paying job opportunities.

Goal 4.3 Promote preservation of and benefit from sustainable agricultural activities, agribusinesses and compatible home-based businesses.

Goal 4.4 Support promotion of tourism, outdoor recreation and responsible natural resource management as an economic driver in the County.

Goal 4.5 Encourage businesses and development to incorporate active lifestyle elements in their projects and activities to enhance the well-being and health of the workforce and residence.

83.3% of respondents felt that the above goal statements would help the County positively develop the local economy and bring employment and business opportunities to Bannock County. The following reasons were cited by respondents who did not agree with the statement.

- Economic vitality is rooted in a living wage, the county should ensure that new jobs pay a living wage and should support a raise to the minimum wage.
- The County should do more than support the development of business, they should actively develop the skills of the workforce.
- Protect rural agriculture and farmers by keeping local farmers markets and promoting local foods
- This goal area had a number of respondents indicate that they did not think these goals were implementable and they have not seen the county act to promote these goal statements in the past.

Economic vitality Suggestions for Projects and Actions.

When asked to leave suggestions for projects and actions related to economic vitality, respondents had many suggestions. Here are some of the most frequently mentioned and relevant projects/actions (related to economic vitality) presented by survey respondents.

- Support businesses by expanding greenways and trails
- Support downtown businesses as a core retail/community center
- Clean up roadways and community edges to entice more traffic
- Need to promote tourism to a greater degree.
- Offer workforce development opportunities targeted at women, minorities and individuals with low income positions. Need to create a safe and encouraging work environment in the County.
- Bring in manufacturing and tech jobs with targeted incentives.
- Attract businesses that are good for the local context not just based on big monetary investments.
- Environmentally friendly business promotion should be prioritized.
- Transitioning to 100% renewable energy would be a big attractor for new businesses to come to the region and could attract businesses that help keep youth in Bannock County.

Goal Area 5: Transportation

Respondents were asked to review and provide input on the following statements.

Goal 5.1 Work collaboratively internally and with partnering and neighboring jurisdictions to maintain an efficient local and regional transportation system.

Goal 5.2 Implement multi-modal transportation alternatives to support walking, biking, and public transit and freight movement throughout the County.

Goal 5.3 Ensure that all urban and rural roadway systems meet applicable standards and current and future needs for the community.

Goal 5.4 Integrate land use and transportation planning when reviewing future development to ensure that it aligns with community and regional transportation goals throughout the County.

Goal 5.5 Support public and private airports throughout Bannock County.

88.2% of respondents felt that the above goal statements would help the County positively develop and maintain a local and regional transportation system. The following reasons were cited by respondents who did not agree with the statement.

- The goal statements do not incorporate safety as a priority.
- School transportation needs to be included as a goal/subsection
- Public transit is not highlighted to a great enough degree
- Private airports are not desirable and create noise and carbon pollution
- Many of the goal areas are focused on traditional automotive transportation and don't address the environmental impacts of fossil fuel transportation fleets.

Transportation Suggestions for Projects and Actions.

When asked to leave suggestions for projects and actions related to transportation, respondents had many suggestions. Here are some of the most frequently mentioned and relevant projects/actions (related to transportation) presented by survey respondents.

- Develop a county wide transportation plan to help implementation and project design.
- Due to the frequency of Caterpillar wide-load vehicles there should be adjustments to lane widths if we want to incorporate safe bike facilities.
- Identify and assess local bridges and culverts over perennial streams/rivers to identify any that impede recreation access or cause harm to rivers/streams/wetlands they cross. Create a priority replacement list.
- Offer incentives for low-emission vehicular travel.
- Add wildlife protection elements like fences and animal over/underpasses over busy roads.
- Rural communities could benefit from a bus/van public transit system.
- Yellowstone is becoming more congested. Traffic is backed up at many lights, so consider adding an alternative road/path to get across town.
- Improve maintenance on existing roads before constructing new ones.
- Support cycling on county roads with shared and shoulder bike lanes, seasonal sweeping. Paint roadways with bike lanes in mind whenever possible.

Goal Area 6: Public Services

Respondents were asked to review and provide input on the following statements.

Goal 6.1 Coordinate with the Pocatello and Marsh Valley School Districts, as well as private and charter schools, to plan for future growth and enhance access and safety.

Goal 6.2 Work with institutions of higher education to expand training and workforce development opportunities in Bannock County.

Goal 6.3 Expand and support public utilities, facilities, services and transmission corridors to meet the growing population and future demand in Bannock County.

Goal 6.4 Ensure that the County is prepared to respond to emergency situations, natural disasters and other threats.

Goal 6.5 Consider locations of current and future utilities (i.e. electric, natural gas, data transmission corridors and solid waste facilities) as part of land use planning decisions.

78.8% of respondents felt that the above goal statements would help the County improve access to education, public facilities and the performance of public services. The following reasons were cited by respondents who did not agree with the statement.

- Many respondents who did not support the above goal areas indicated a lack of faith in the County commissioners to reasonably implement these goal statements.
- Schools need to be a higher priority and cannot function well without additional funding.
- Public services will require additional resources and staff with the continued population growth in the County.
- Public services should include alternative energy.

Public Services Suggestions for Projects and Actions.

When asked to leave suggestions for projects and actions related to Public Services, respondents had many suggestions. Here are some of the most frequently mentioned and relevant projects/actions (related to Public Services) presented by survey respondents.

- Develop a new fire district
- Invest in alternative/renewable energy sources like solar and wind farms. This was mentioned in 28% of responses to this category.
- Support expansion of mental/behavioral health services.
- Hire more county police officers and increase patrols in small rural areas.

Full Survey Responses

Below is a full list of responses for each non-identifying question. Note that responses have been sorted alphabetically to increase anonymity. Due to the wording of the questions, many respondents simply answered “No” in the open ended responses. We have removed these “no” responses to save space in this document, no other edits have been made in any way except to remove identifying information.

1. Do you generally feel that the vision statements (shown above) reflect what you want to see in Bannock County over the next 10 to 20 years?

"Responsibly manage and maximize benefits of its natural resources" could be interpreted as maximize FINANCIAL benefits. I am concerned about the PROTECTION OF our natural resources.
>t sounds like business as usual when we have 12 years to fix the climate or face a very different world. How is the county addressing this existential threat?
Encouraging development will only move this community to being larger and busier, not enhance it.
I feel all of the statements could be good. But for areas like McCammon, Arimo, Downey, Swan Lake, and so on...the reason most people live their is because of the remote aspect of it. Downey has good health and dental offices. Arimos Gas station is coming back and McCammon Just put in a dollar store. The dollar store was placed in a small market. The short stop was the only grocery store in the area and now a bulk of their customers go to the dollar store, which could put a small locally owned and run business out of a living. I think growth is good, but we cant lose what makes the remote areas....well remote.
I like these statements, but would like it to also mention that the county seeks to protect the property rights of its citizens.
I would like to have included in the goal a desire to be fiscally responsible
I would like to see something about agriculture preservation
It should say Responsibly manage and protect its natural resources and area for current and future residents. Also operatesin partnership with cities, tribes, educational institutions, non-profits and other jurisdictions within ...
needs to be accountability of county departments
No mention of water quality and renewable energy goal
Not enough forward growth. Need to get in the 2020+ mindset in actions not just words
South of Pocatello doesn't get looked at much
The county is already hard to deal with on any building project, why add more oversight.
The plan is too vague, it doesn't describe details.
the public open house had many comments to protect drinking water and the aquifer. It should be a separate stated goal.
The statements are outside the purpose of a County government.
The words citizens and/or residents are not included. It has been my experience the mayor and city council do not listen to the input of citizens and this needs to be changed.
There should be some mention of diversity other than economic.
There's nothing that talks about the rural communities in Bannock County
They seem like verbose and general statements
This county really sucks. Planning, people in office - everything.
Vision statements refer to quality of life but fails to take into consideration that quality of life is also powered by a quality wage and the benefits that accompany a quality of life.
We dont want big subdivisions and land divisions.
What is the vision. The only thing we see from the County is an increase in taxes.

2. Do you have any specific ideas or suggestions regarding the vision statement you would like to share with us?

A Focus on the smaller cities could go a long way to attracting what you want here
Additional quality of life activities. Expanded walking and biking paths/trails.
Again, I would like it to state something about respecting the personal property rights of the citizens of the county.
Agriculture should be protected. We need our farmland to be preserved.
Ambitious and relevant.
Be a more open and responsive county to each and every resident within the county boundaries equally.
Be sure to be transparent and take ownership of difficulties and problems encountered.
Businesses needs to maintain landscaping. People need reasons to stay here locally and spend their \$\$\$. Old dilapidated building need remodeling or removed.
Clean up existing issues that exist in the county before mass expansion. Lots of lots and areas are full of junk and debris. Support and enforce current code and zoning restrictions.
communicate any changes that affect other offices within the county along with city offices etc. When a new software program or website that has been used by more than one office is changed without any notification it can cause issues with the work flow of others that use that information.
Don't forget Bannock county goes clear to Swan Lake.
Don't just partner with Pocatello. There are other Cities in the County. We pay taxes and don't have the representation. An example is EMS services I live on the north end of the County My closest ambulance comes from Pocatello. I am about to loose fire coverage. I expect better service.
Don't raise property values
Ensuring that the details of the plan and the actions that follow actually promote all of those ideals rather than pretending to pay lip service to them. The latter has been the practice in the past. The plan has to have teeth to be effective
Focus on oversight, improvement and accountability of election process; oversight of county roads and bridges, enforcement of state laws; oversight of county jail, etc.
For a community to be successful we need not only rhetoric but action and opportunity for everyone. Paying restaurant servers 3.00 or so an hour an making them dependent on the generosity of those they serve. This is punitive and needs to be changed.
How will the County be transparent? The commissioners are not transparent and are frequently dishonest and lie by omission. They have a staff member, Tiffany who is a bully. She is especially horrible to County employees. She caused trouble at the city, why did you hire her? Tovey doesn't care about employees and does what he pleases. A bull in a china shop. Very disrespectful and careless. His speeding ticket incident is a clear example of that. This all does not bode well for the County having a positive regard from the employees. How can we move ahead with such leadership?
I do not
In reference to the below statement: More collaboration with other agencies including Tribal to meet needs as they arise for positive outcomes during volatile incidents. Operate a responsive, proactive and transparent government that works in partnership with cities, tribes and other jurisdictions within the County for mutual benefit and toward shared goals.
It is important that rural communities are heard as well as urban communities.
It should say "all residents" not just "residents".
It's a nice vision, but not very specific (even for a vision).
Let's keep our rural areas rural and not fill them up with sub divisions
Make sure that natural resource use is protected over the push from developers
Maximizing, protecting, conserving and maintaining public access to the area's natural resources are particularly important to me.
Modernism
More emphasis on conservation of resources, increasing income equality, and providing a high quality of life.
No additions, but the difficult part for the county is build those statements into the organization. That is not how it operates today.

No, other than taking care of your employees unlike the city of Pocatello and the fiasco they are in at the moment.
Please be more specific
Protect and preserve wildlife and their habitat..
Protecting rights of agriculture land and Animal owners.
Protecting water and water quality and quantity is necessary for economic development. It should not be lumped under natural resource protection but listed separately.
Put something in it about recognizing climate crisis,educating and working with others toward a solution.
Quality of life has gone down hill.
Remember private property rights. As citizens we have the God given right to develop and dispose of our private property.
Safety and protection of citizens
See my response to #1.
see question #1
Some phrases are vague enough that they may fail to guide county efforts (ex: 'be' diverse/vibrant, 'sensible' development, 'responsibly manage,' 'maximize benefits' - those could mean anything, really). The last vision statement seems to quantify a target better than the previous three.
Statements are just that, but action(s) are what speak loudest. Abide by and actively impose these statements is what I would love to see.
Switch the first two bullet points - it sounds better if "'Protect and enhance residents' quality of life" is the first point - showing that the residents are the first priority.
talk is cheap, but actions speaking louder. Do what you say!
The Commissioners are not transparent in any way. They are also woefully inadequate to understand the budget process and maintain our resources, such as water conservation and management of the Wellness Complex.
The term Natural Resources of course includes water, but I would appreciate a clearer statement of the County's plan to "Put Water First!"
There should be some mention of diversity other than economic.
vision statement should express a desire for the county to keep property taxes to a minimum
Vision statements always paint a rosey picture. Actuality is money, time, and action.
We are a diverse community and the more we embrace that we all live here together the better our community will grow and mature. I feel people want to be connected so lets do more to get everyone involved.
What about infrastructure?
what does economically vibrant mean?
Yes dont let money run our county into a bad place to live

3. Do you generally feel that the goal statements related to growth (shown above) will help the County direct growth and development in a positive manner?

County standards may not lead to desired 'quality of life' outcomes. Also, include consideration of compatibility with natural resources, public lands and open space in Goal 1.3, not just 'city impact' and 'ag' areas, when planning development.
Define “diverse rural living options”
Encourages growth
Encouraging urban growth within ACIs and providing rural living options appear to conflict.
Goal 1.4 (add while protecting water security and natural resources.)
Goal 1.4 is not current being addressed in the Chubbuck area. The county permitting process has stifled landowners with large parcels of land from building a home on them. Ridiculous in my opinion. The county, city or state has no business not allowing landowners to build on their land as long as it is appropriately zoned.
Growth should occur in cities, not the County.

I am not sure what is meant by "provide diverse rural-livnig options within the County". I interpret this to mean more rural development, which will change the rural landscape for the worse.
I would like to see goal 1.2 strengthened. It is important to revitalize less attractive areas rather than expand outward with new building.
I'm not confident that the County will pursue those goals, based on past actions
Include sustainable development, adequate water, expansion of sewer services
It does not mention protection of open spaces and natural habitat, amd public access.
It does not mention sustainability or resilience.
It seems like growth is based on who has the most money not on what is best for the residents of the county
Most businesses in Pocatello close.
Need sustainable growth, with new trends in alternative transportation and more dense living to make our area competitive.
need to be more specific. growth in rural areas is taking away ag lands and wildlife habitat
need to expand on infrastructure support first before expanding, we cant maintain what we have right now with the personel available, to much overhead and not enough skilled labor
Rules get bent
say NO to ridgetop building
Species all over the world are going extinct at an alarming rate. Our growth needs to recognize this and work towards survival of other species.
Stop raising my property taxes. I moved here 2 years ago and ready to leave. You guys are all idiots.
The county is not showing they are fiscally responsible
The growth is mainly just bottom dwellers
There is no j ok...i bs to support the vision
This is all open to interpretation. Goals can be great but leadership will need to follow through on this regardless of management changes over the years to come.
This is not the job of County government
Too vague. They have hired a person who has no idea how to centralize expenditures.
Very little development by the county.
Vision statement and goals mean nothing without progressive attitude
We have shortighted county commisioners who are supposed to helping residents outside city limits be safe, however we now have to develop our own fire department and all they can think ofhow much more can they get out of county residents through higher property taxes.
We need to make sure rural is truly rural, not just large lot suburban.
You are wanting to do nothing but let people come in and divide out land in the country and bring in a bunch of out of states to cludder up our beautiful areas
you need to address water quality, source protection and limited resources more fully
You will not follow the plan. The first time someone comes in and complains about the plan the Commissioners will cave and back to no plan. What are the plans for growth? I feel the County and City's should work together to foster growth and development.
Youth are left out. Bringing in new life and opportunities

4. Do you have any suggestions for actions or projects that you would like to see the County pursue in an attempt to positively guide growth in the County? Please leave your ideas in the text box below.

- Make data-driven decisions. (Evaluate impacts of proposed development on existing water supply, for example.)
- Research and implement best practices rather than relying on legacy or personality-based policies & procedures.
- Utilize expertise from state and federal land managers to dovetail on natural resource management.
- Plan & budget so County can keep up with basic technology needs.
- Link new development with requirements to help meet expanding emergency service needs (eg. fire response, and also mental/behavioral health services).
A cleaner Portneuf River
Adopt city standards (or more closely to city standards) within the area of influence of cities.
affordable housing options for low-middle income families
Allow no lots smaller than 5 acres.
Be cautious in allowing out of control rural development. Five acres or larger, not smaller, is important! We need to manage our resources, and too much rural development is dangerous to those natural resources--water being number one.
Be sure TIF'S are really for blighted ares not a revenue stream for a city.
Better shopping so that residents spend their money within our county in lieu of surrounding counties.
More entertainment adult and youth.
Bike lanes on Hwy 91 from the Portneuf Gap to McCammon and up Marsh Creek. This is a heavily used running and bike area and it can be dangerous with Caterpillar and their oversize loads and drivers who have no interest in sharing the road. Of course bikers need to ride responsibly in single file too. Make it safe for kids and adults to ride or run on county roads. Biking/running makes us healthy.
LITTER pick up. No one claims responsibility and it is disheartening to see trash on the county roads and also on the interstate shoulders. What makes Idaho beautiful is the ABSENCE of litter along the roadsides. IT's not an easy job to bend over and haul it to the landfill where it belongs but someone has to do it. Obviously, not everyone has beauty as a priority.
FINISH the Greenway! Visit Boise's greenway and you'll see why! People LOVE the greenway. But it has to be connected not fragmented.
ALL OF THESE IDEAS ARE INVESTMENTS IN THE COMMUNITY THAT WILL MANIFEST LONG TERM POSITIVE ECONOMIC DEVELOPMENT.
bike paths on the busier rural roads - buckskin, rapid creek, Marsh Creek, Old Highway 91
Bring in businesses that create jobs and pay taxes. Government and churches do not. Can not bring businesses in when taxes are high and bannock county is in the top 3
Bring in jobs . Dont ask homeowners to bear the burden
Clean up the zoning ordinances to make growth easier to achieve.
Conduct a sustainability assessment to establish a maximum population for the city. Air quality, water amount and quality, waste disposal, traffic, Do people really want to have the same traffic as Boise or Salt Lake? Must we always make the same mistakes?
Cooperate with city efforts to sewer. Avoid more septic systems.
Develop a plan to protect natural areas and maintain public access.
Expand the departments maintaining the county, personell additions to work as well as wages to bring in better people to do the job rather than mediocre people that do little work for little pay.
Fire Districts. We are currently relying on Chubbuck for fire protection. As of October 2019, who knows?

Help cities like Pocatello monitor resources to ensure availability of growth to ensure they don't out grow their essential resources' leaving the city with deficiencies.
How do you plan to manage water quality when more rural growth will occur with more septic systems being installed?
Human development should be inclusive, safe, resilient and sustainable. Ensure sustainable production and consumption patterns, ie promote recycling and composting. Your plan should encourage in-fill - make our cities dense so that we can all enjoy the areas outside of our city. Our cities are expanding, yet many homes are abandoned or empty. Growth should be to in-fill and make beautiful what we already have.
I feel with any growth that proper planning is the key. Foresight not hindsight
I think the commissioners we have now have their hearts in the right place and understand how people in the community think. It's important to remember that we are a conservative community and individual responsibility is key to growth. Let's remember to keep the focus on Bannock County and not attempt to emulate Ada or any other County in the State.
I would like the county to review and alter the 40 and 5 acre requirements that exist as it deals with agricultural land. In many instances over the years I have seen these rules not achieve the county goals and create waste areas and eyesores in the county. Also need to review the open space requirements. Seems a little redundant when we already have a limit on how much of a lot can be built on .
I would like to see more growth in the old areas of Pocatello. Also more connection between the East and West benches....maybe a bike/walking path?
Just enforce the ordinances already in existence and don't change the zoning willy-nilly.
Keep current property owners values and conditions in mind prior to negatively impacting them with dramatically changing bordering properties.
Keep housing affordable
Keep the growth within the city limits. There are many empty buildings to fill. Preserve agricultural land!
Leave the 5 acre rule to prevent new and expanded Nitrate Priority Areas designated by IDEQ
Limit additional septic systems in areas designated as high priority nitrate areas and keep updated overlays of these and other IDEQ contaminant plume areas available to the public (e.g. Landfill TCE, PCE and EDB plume maps in North County. Access and full disclosure to potential buyers is needed.
Lower taxes and utility bills
Make sure we have sufficient and affordable fire protection
make use of Portneuf River as a recreation feature - float, fishing...
Minimize changes to residential density outside of urban development areas.
More attention should be made to developing lower income housing.
More business in the area, less front page news about bad stuff. Make employees feel needed. I am tired of see good people victimized by other employees. Bannock County is a great place to live. It should be a great place to work too.
More rural funding
Need to attract a higher class some how and be more attractive to outside businesses
No suggestions, but your goals should be more specific and measurable.
Preservation of our Community's water supply. Common sense water restrictions on new development and programs with incentives for existing property owners to reduce turf.
Promote high density development rather than urban sprawl ; maintain natural areas
Property taxes make it impossible for some to purchase homes.
Reduce lot size in rural areas to 1-3 acres.
Require water studies on each property in rural areas
revitalize existing urban areas rather than expand outward. This could be done through economic incentives for developers to look within town rather than at the edges.
Slow and steady positive/responsible growth.
Some incentive for businesses to come in. People shop local money will stay local for ex., not to I F. Or Utah

Strongly encourage growth in and around existing communities, not in rural areas
Technology and parks. More activities and opportunities for non-Idaho natives
The county should mostly be concerned about maintaining its roads and landfills and other county services.
The growth statement needs to take into account other environmental factors like wildfire and and help species survive; example construct a bridge to help species cross the highway safely.
The protection of our ground water should be an overarching goal that directs other goals.
Work toward "smart growth" standards that take into account our limited resources and the impact development has upon them.
Yes connect all the random walking/bike paths. There is not any order to them all and they are random and do not connect to one another.....
Yes we need to get rid of the useless commissioners and elect some that are willing to work with the people and not against them. Leaving the rural parts of the county without fire services is inexcusable and need to be remedied. I want to know what they are doing to redeem themselves in this area.
You see in other communities residential neighborhoods that are just outside city limits that have an acre or 2 of property with the home. The subdivisions being built now are small 1/4 acre lots, squished together with no room to breathe in between lots. This should be available but also with affordable homes. You shouldn't have to spend \$300,000 to get a nice home with a little piece of ground.

5. Do you have any other comments related to growth that you would like to share with us?'

Alot of people want to live in the county. Living in Chubbuck and Pocatello has become so expensive. Taxes and water. I enjoy living in the county. Chubbuck and Pocatello have become congested with traffic. The two cities talk about growth, the roads are maxed out with traffic. Look at the Chubbuck corridor, after 8-9 am forget it
Both water quantity and quality of surface and aquifers must be weighed equally with economic growth.
Carefully analyze long-term liabilities from new growth. Roads have a long-term cost, as do other improvements, that tax revenue does ultimately support.
Collaboration is key to all of this. Presently, county officials
Don't keep changing the Zoning. Keep consistency.
Fill up current rural housing projects before approving new ones.
Growth in a city's impact area puts a strain on that city's parks and roads and other infrastructure. The cities should be compensated somehow through the County tax system.
I understand that property taxes in Bannock County are among the highest in Idaho. If this is true, it appears that increased fiscal prudence is indicated.
I would like to see growth along county maintained roads and smaller lots and parcels allowed. This might protect some of our rich ag land from being taken out of production.
I'm all for growth but not at the expense of HUGE, unreasonable increases to my property taxes.
Internal growth with county entities needs to happen with the growth and not as a afterthought. We need folks that are not afraid to move forward
Just as stated earlier preserve our agricultural lifestyle
Keep rural areas rural, and keep new housing by pre-existing housing developments. And please limit and keep low-income housing closer to larger cities. It brings to much crime/drug use.
Make the goals specific and with numbers that are measurable.
Manage growth. A new idea doesn't mean it's a good idea.
Minimize urban sprawl and consumption of natural areas, and maximize protection of water resources
Modernize
More economic growth in rural communities

My fear is seeing ag land bought up by greedy developers who throw up cheap, tract homes and apartments with the promise of creating a “beautiful utopian community”. Once they get their money, they leave to destroy the next small town, often leaving incomplete projects and no plan to maintain the “paradise” promised.
Only until you have a strong infrastructure and core to the county will it grow. You cant build a structure without a strong foundation to support it.
Quality and safety of citizens in our county will continue to be negatively impacted by lack of commissioners, prosecutors and judges failing to hold persons accountable for failing to abide buy code or zoning restrictions. Lack of an active Sheriffs department is also a negative currently .
Reduction of sprawl and protection of water resources have to be prime objectives
See above
See the answer to number 4
Seems like we get in our own way when it comes to growth. The wheels turn slowly. While understood, it seems to stunt growth.
smaller/ more dense housing saves grazing and farming land, lowers the public infrastructure costs, and allows for a healthier walk-able community. Lets not plan for the past.
Stop making exceptions in robin ID for people on land just because they have money which somehow gives them a big push
Support for key services Police, fire. And health for growing population with fair share payment
The ability to build outside of the city is difficult due to the zoning laws.
The costs of growth and who will bear those costs needs to be considered. Growth that provides income for a few at a cost to others who are given no say in the matter concerns me
The five acre rule for septic tanks is unsustainable. Need a better way to manage nitrate pollution from septic systems.
The good neighbor policy that Steve Ernst had needs to be brought forward to this effort. The Source Water Protection Ordinance started after the last Comp Plan needs to be completed to protect the Lower Portneuf Aquifer. Building within flood plains, shallow aquifer areas, geologic hazard areas and urban wildland fire areas should not be allowed.
The SE Idaho economy depends on outdoor rec and tourism. Our ag economy depends on natural resources like water, topsoil, and pollinators. We cannot afford to subdivide, pave or plow under everything from property line to property line or to the edge of every streambank without losing the natural resources that drive our economy. Please incentivize conservation planning, development that supports multi-modal travel, as well as design standards that promote open space, retain native vegetation, and access to public lands. Thank you!
There is nothing in your growth plan that talks about clean water or clean air. The more people there are the more difficult that becomes. What's your plan?
This is not the job of County government.
When the city commits to support fringe development-outside the downtown core, it should commit to a percentage of those dollars for downtown revitalization and enhancement. Make the downtown businesses and property owners as much a concern as the new stuff on the edges. Promote unity enthusiastically. We need both areas to make the community strong, and fun.
Work with others and bring more jobs to the area.If you are doing this you are not sharing it with us. Tell us what is going on.
Yes, quit being in the pockets of the greedy realtors and land developers who want build and build at the expense of current property owners.

6. Do you generally feel that the goal statements related to recreation and open space (shown above) will help the County provide accessible and sustainable recreation opportunities and work to preserve and protect open spaces in the County?

at this point in the county's life it cannot sustain any further growth without the means of maintaining said expansions
Between Private and Government owned the public can't access any land. What land you can get to is land locked around private land.
Do not fragment the few open wild places that we have. For example, boating on the Portneuf will disturb the beaver and muskrat population. Ducks lose their flight feather in mid-summer so they will be unwilling subjects of harassment by boaters.
Does not mention protection of fish and wildlife habitat or corridors or wildlife migration and movement.
Doesn't matter
I'm not sure it is at all cost effective to have a connected network across the entire county. Parks are more of an urban amenity and should be left to cities.
Let the city's take care of parks
No, because there is nothing specific. There are no numbers that are measurable and therefore no accountability. Make your goals specific and measureable.
None of these goals include wording that directs county to achieve "accessible and sustainable" rec opportunities. What is the definition of that, anyway? Also, no direction to coordinate with others incl state and fed land plans and subject matter experts on rec planning that adequately identifies and protects rec resources like habitat, wildlife corridors, waters, dark skies, quietude, etc.
Not enough public support or buy in. More communication
Other than being given the wellness complex what have you done.
Prices for things will make it so not all can use these areas.
Specifically, dog parks need to be a part of planning and continued support. The current dog parks are lacking resources.
The goals are fine, but need more specific requirements that provide for recreation while preserving open space and protecting wildlife
Then county has no business providing recreation for its residents. It needs to spend it money on basic services, i.e., law enforcement, roads, bridges, landfills, etc.
This is not the job of County government. Private non-profits should be leading this effort.

7. Do you have any suggestions for actions or projects that you would like to see the County pursue related to recreation and open space in the County?

- During planning and implementation, identify sensitive resources that can be damaged by recreation use - not all areas are appropriate for recreation.
- Wildlife migration corridors need to be identified and accommodated by ALL types of planning and development, including recreation.
- Establish a special initiative for supporting rehab and enhancement of the Portneuf River (and major tribs like Marsh Creek).
- Implement pollinator-friendly practices and dedicate habitat (like "5% for Pollinators") in all parks and recreation facilities, including 'landscaped' areas.
A comprehensive plan that integrates with the efforts of the cities.
A trail connecting Lava to Chubbuck would be awesome! I think it is mostly county.
After we get recreational area, they need to be maintained and kept up!!!!
An app for interactive live maps of all trails in area no matter government jurisdiction.
bike path - see answer on number 4

Continue to allow recreational use and open space use. This is a big economic function for Bannock County as outdoor recreation generates revenue for the county and local jurisdictions.
County wide recreation and open space maps would be a good start, including public access areas for fishing, and land protected by conservation easements
Designate which areas should be retained as open space in coordination with BLM, FS, and IDFG, along with public input.
Develop and brand the Portneuf River as a major asset to the community. Prioritize projects that provide access and clean water.
Develop plans to protect fish and wildlife habitat.
Dispose of park space. This is an unnecessary expense to taxpayers.
don't believe it will happen
economic benefits from recreation are not just from created spaces, and access to the outdoors is something we need to jump on
How is "manageable" defined for park system? Parks are very important particularly for kids.
I LOVE this.
We so need a bike path from Pocatello to Inkom and on south. If you build it, we will ride it.
I made many suggestions in the growth area above.
Bike/run lanes on county roads especially Hwy 91.
Finish the Greenway.
Keep it looking good.
I would like to see a bike trail that connects Chubbuck to Pocatello to income to Downey to all the little towns south of here. There could be like a bike pass that gives you a small discount to encourage you to buy something in those little towns.
I would like to see a master plan developed and then have the public given the opportunity to comment on it. It would be a nice start.
I would like to see more green belt along the river or even open the river up so it can be used as an asset to our community.
I would like to see safer biking paths and lanes.
I would like to see the Portneuf river developed into a recreational waterway. Currently it seems to only serve as the dumping site for the crap from the city of Inkom as well as the cow manure and crap from the septic tanks of the people upstream.
I'm not sure this is an area in which the county should take the lead.
It seems like everything is private land anymore. Yes we need areas to walk, hike ect. But where and at what cost?
keep developments in clusters where appropriate
Make sure there is adequate funding for maintenance and up keep
One word: FUNDING -- Good luck!
Pay for use in recreational areas.
Protect wildlife habitat
Public buy in on larger scale
Put requirements for public open space preservation and development into the plan and then pass ordinances to ensure it happens

Remember parks and trails take money to sustain after they are built. It's not a one and done situation. Plan for future upkeep!
Repair & maintain what's already there
See previous answer
The access to public ground is fair.
The Open Space Recommendations from the last Comp Plan effort should be updated and protection of open space of agricultural lands and no hill top development should be added as a goal statement. (e.g. maintain the visual resource character of the County)
The open space report compiled after the last comp. plan should be updated and included in this update. Recreation trails should be screened using natural vegetation and engineering standards so that scenic visual resources are not impaired.
The Portneuf Well Center needs to be utilized for other things besides concerts to generate revenue until the contract with the concert vendor can be changed. I believe there were good things happening at the fairgrounds in the past, I hope that continues with new management.
This is an area that I don't believe that we are progressively working on. There is so much potential, but little done to promote what Bannock County has to offer and so many tourists that could take advantage of.
Utilize the organizations and churches in the area to help keep the parks and trails clean and beautiful.
Utilize the wellness complex to its full potential. Offer more lake recreation.
We can't manage the wellness center, so how can we pursue these other goals?
We need to be proactive with our current trail systems. They need cleaned and managed. Why expand when we don't take care of what we already have
work with other agencies (BLM, Forest Service, tribes) to help promote connection and maintenance of outdoor spaces
Work with the City's. I leave near the hiline canal. Chubbuck has spoken with me about a trail on the canal. Why Chubbuck. It should have been the County. I feel the City's do a much better job at this than the County. Maybe you could just pay them to do it?
Would like to see bike trails around inkom area, to help bikers safety. The highway is not safe.
Would love to see dog friendly recreation areas and walking paths.
Yes. Ban human use.

8. Do you have any other comments related to recreation and open space that you would like to share with us?

I feel we need something for our youth is in major need. We truley have nothing for our young adults from 18 to 25. I feel this is why we have so many legal issues with our youth
- Motorized and non-motorized recreation are inherently incompatible, especially without strategic management.
- Noise and light intrusion needs to be considered as part of any open space or recreation planning.
- Rec budgets need to include money for nuisance and noxious weed control, as well as vegetation enhancement/protection.
- Bannock Co Fairgrounds are definitely a contribution to our community. Please make sure the facilities and program gets the attention it deserves to stay safe, humane, and relevant.
“Functional uses” is rather jargony.
County needs to update it's county roads that provide access to public lands. Several of the county roads have been closed off over the last 30 years. The county needs a specific plan on which roads will remain open to access public lands.

Crack down on JUNKYARDS. There are some ridiculous eyesores and it's time to grow up and enforce the rules about junk cars and other unsightly junk left to rot in the landscape. There are plenty of in town eyesores too. Enforcement. Help property owners if you have to, be nice but strict.
Everyone wants open space. It needs to be done right and it needs to include everyone.
I just feel like it is very important.
I like this goal the most
I think the Wellness Center is great. I do have some concerns about Bannock County being in the Concert business but I understand it's what is best for the community. I never want to see our County taking jobs or opportunities away from it's citizenry.
If new development means that money will not be available to maintain currently developed spaces, be open about that.
It's a brilliant dream, but is it attainable? We shouldn't set goals we can't reach.
Keep it clean and free of the MAGA people who only want to do is trash it and leave their beer cans behind.
Leave the development of parks to urban areas.
Not enough done to promote and create ways to capture tourists to the area.
Public transportation as more viable option
See that the County enforces owners and the county to eliminate nauseous weeds..
Should never be able to force private landowners to give land for these goals.
Supports quality of life
Trails on the benches and Mountains should be planned and designed to not be visible from the freeways and highways. The goal is to protect the visual character of the County and scenic vistas.
You need to continue to appropriately fund and maintain the wellness complex and plan accordingly to be able to maintain it long term. Organization and use of that facility and it's grounds have been haphazard to date, and poorly planned out. Current usage of the amphitheater is severely underutilized and the current contracts need to be terminated and the County needs to take the responsibility for contractual usage agreement upon themselves. The same needs to be done with the refreshment facilities on site. Outsourcing your contracts is binding your effectiveness, and causing loss of income needed to adequately run that facility. I do believe that your newly hired facility manager is a step in the right direction. Hopefully he can get a handle on this problem before it gets out of control.

9. Do you generally feel that the goal statements related to sustainability (shown above) will help the County manage and protect natural resources, protect habitats and mitigate natural disasters?

3.2 Why are you only encouraging protection of eco systems? Why aren't you protecting it? 3.1 I've seen the map of the plume coming down from our landfill your comprehensive plan should address cleaning that up not just maintaining clean water..3.3 do more then evaluate actually improve and enhance.
Again, the goals are fine, but the county needs specific plans or ordinances to adequately protect groundwater, open space, wildlife habitat, and recreational opportunities.
All open space should not be limited to dry hillsides. Some should be required to be in flat green land. Open spaces should be required to have more access to the general public and not limited to the development. It should have access points for the public.
Because the politics of the County run counter to these goals, at least based on the previous plan, actions taken counter to the plan, and actions not taken
Because you won't follow it. As soon as we get a new commissioner that sees a different need this plan is forgotten.

County should do more to protect its citizens from industrial pollution. County has a bad track record of this.
Drinking water, surface water and water quality needs to have a stronger emphasis in this section.
Goal 3.1 is fine, the rest are outside the scope of what the county should be doing.
Goal 3.1 should be a separate goal category since it had several comments at the open house. Integrity of public comments matters.
Goal 3.5 means that the environment and the animals in it always lose to humans.wish-washy. Need strong words.
Goal 3.5 states: Implement priority mitigation projects..... Are these mitigation projects designed to torch wildlife habitat and so that their environment become inhospitable? Humans are the most invasive species. Why don't we make ourselves less invasive instead?
It should say something about working with educational institutions and using best practices as well as established scientific findings from peer reviewed research. The research should not be from corporations.
Liveable wages with COLAs need to be a part of the plan. Our county employees are paid less than other areas and this is not right.
Needs to mention conservation of stream flow in the natural stream/river channels to maintain water quality.
Recycling should not be optional or hard to do
Vague. Lofty expectations. How does the County plan on making this happen. Great aspirations with no way to make them happen. Seems likes lot of words with no action
With the great interest in the open house to protect drinking water, it should be a separate goal.

10. Do you have any suggestions for actions or projects that you would like to see the County pursue related to sustainability in the County?

3.1 is especially important.
A "put water first" goal statement should be a separate goal category.
Actually informing the public about said things is key. The county has been very good about not informing the public in this field described.
Addressing recycling would be nice and potentially profitable
Adequate funding. Foresight
Again, promote the areas to camp, stay, etc.
All source water areas for public drinking water systems should be designated with buffers and high priority protection from wildfires and urban encroachment. Education about private well casing integrity and septic system location is a County responsibility.
Any projects must be built to last and easy maintenance. If you can maintain it don't build it
Aquifer protection plan for the county and each of the cities.
Floodplain protection to improve water quality and to provide undeveloped space for streams to flood
Develop a defined plan to deal with septic tanks and the nitrate pollution of our groundwater. Need to coordinate with the City of Pocatello on how to maintain and improve our groundwater.
Do something. Not just a survey. Make a plan set a goal show us what our tax dollars are being used for.
Don't allow growth and developments to put our water supply in jeopardy.
Encourage people using our natural resources to take care of them and clean up after themselves and others who may not care as much
Energy efficiency, including on-site energy sources and how we lay out and build our road network, as part of the county's 'quality of life' and 'economic vibrancy' vision.
Enforce existing codes as written - especially those who burn with burn bans in place.
Exposure to initiatives and plans in the rural areas could be greatly improved.

find a way to counter the sprawl of the cities in the county, keep them condensed
Fish and Game play the biggest role in this and not really the county.
How will the increase of septic systems affect this?
Also the county has an All-Hazard Mitigation Plan that is updated every 5 years. How do you plan on implementing this into the comprehensive plan? FEMA dollars come from the All-Hazard Mitigation Plan through Emergency Management.
keep large acreages for septic systems
Keep off limits to the realtors and land developers
Make 3.1 official by adopting a groundwater ordinance.
Make sure wells are proper distance apart. We had a community well put too close to our well. Someone should have inspected that well site and stopped it from being drilled.
Managed rural.growth!
Mention the importance of decisions being grounded in science.
My concern is that we just keep building. I remember the old statement "I went to the country but the country wasn't there. Let's use what we have instead of developing existing farm land.
Public meetings to educate community members, new articles, working on projects with nonprofit organizations to promote sustainability; have written codes and expectations for developers and planning and zoning personnel at the county and city levels
Purchase water rights to maintain stream flow in the Portneuf River.
Recycling programs with wide scale public buy in
Require that mines and industrial facilities do there share to protect our air and water. The existing industrial facilities are a black eye for this county.
Review of location of the land fill at Fort Hall Mine Rd. This location impacts the aquifer and we need to look at relocating the landfill to an area that does not have such a potential negative impact on the aquifer.
See above.
The only way we as a county can have sustainability is to be diverse. We must promote business growth we're we bring people that don't need hair nets and drive up window experience. We need to quit being a minimum wage town....
There are places at the edges of town-Pocatello and Inkom, along the railroad tracks and at crossings, where there could be minimal tidying up that would make us look more civilized. Trim some trees, pick up trash that's been there for many years, fix fences.
Some of the signs in the Blackrock area about geology and history are falling apart. Fix them, maintain them.
There have been issues with the Portneuf river in Lava Hot Springs where tubers float on the top half. Why can't something be done to take out the boulders and rocks in that area to decrease injuries.
We don't even have a floodplain manager right now. I don't see this as a priority of the Commissioners in any way.
Yes. Create human-free spaces.

11. Do you have any other comments related to sustainability that you would like to share with us?

Add a goal of Water security. Water security is sustainable access on a watershed basis to adequate quantities of water of acceptable quality to ensure human and ecosystem health---basically taking care of water we use and have now.
Again, there's no mention of our climate crisis, and what we can do to mitigate or adapt to the effects that we know are imminent.
Education for the public on why sustainability is important
I feel number 10 said it all we need good jobs not more fast food garbage jobs
I like this too
My comments remain the same, need more specific goals with numbers and measurements. I hope they come because what is written now is nice, but very, very vague.
Please remember to work WITH the small towns in Bannock county. Remember Pocatello/Chubbuck are not the lone entities in this county. Help all parts of our county be a sustaining part of the county.
Sustainability comes from having a healthy commerce and competing with other municipalities for jobs and residence. We can do this by providing equivalent pay with the site and Idaho Falls. Keep the workers here.
Thank you for incorporating these goals. So many places in the U.S. have forever lost the resources, quality of life, and opportunities that we still have. I appreciate the proactive intent of this section.
The tribe probably needs to be part of this plan as well
We live in an area that doesn't exactly cooperate with any sustainability efforts.
With growth the need for schools increase.
Without protection of groundwater and source water areas first, economic quality and recreation will be limited in the future. A statement about water security (protect the water quality and quantity we use and enjoy now and into the future.)
Without specific plans and ordinances nothing will change. The County will just continue to allow un-managed growth in rural areas that destroy both ag lands and wildlife habitat.

12. Do you generally feel that the goal statements related to economic vitality (shown above) will help the County positively develop the local economy and bring employment and business opportunities to the County?

4.2 and 4.4. Again, why aren't you just doing it not just supporting it.
Add goal 4.6 Encourage economic development by incorporating protection of drinking water through water security.
Again. Not the job of the County. Stick to the basics. The private sector will handle the rest.
G0als 4.1 and 4.5 are fine, the rest are outside the scope of what the county should be doing.
Insular, non-inviting community if you aren't LDS
It should specifically state: team up with local institutions of learning to develop skilled workforce etc. Notice not just "support" them but to actually develop these workers.
Leaving out rural communities
Not much growth in the area. No really good businesses around with high paying job. The same few are still around. Railroad, Simplot, and a few others. Pretty lame
Once again in a year or two this plan will be shelved and a new shinier (toy) will be back to zero. Tell us what business the County has brought in? What development has been done? Work with everyone in the County to make this a Positive place to develop. ISU for education, ON for manufacturing
Only if followed with wise actions.
Rural residential must protect small farmer's market growers and promote locally grown local foods.
Still need tax base from employers
Vague.

Water will become increasingly more valuable as the county grows. Need to plan for how to improve water storage and improve water quality in Marsh Creek and the Portneuf River. Need a comprehensive water management plan to ensure adequate water for irrigation and recreation.
We need to raise the minimum wage. If people work 40 hours a week they shouldn't live in poverty.
what can the county do to achieve this
You mention a skilled, talented and trained workforce. Make sure they are paid well for what they do!

13. Do you have any suggestions for actions or projects that you would like to see the County pursue related to economic vitality in the County?

It is the individuals job to promote and maintain a healthy lifestyle not Pocatello businesses.
Actively recruit environmentally friendly business to the Bannock County area.
Actually bring events to the Amphitheater
Again taxes are too high
Avoid jumping on development proposals with empty promises. That has been the tendency, and the county and city waste precious resources by believing dodgy development processes
County should be clear that all businesses should be environmentally concerned, with low water use, low carbon footprints.
Encourage mentoring of women, minorities and those with low-income backgrounds in careers with the county. Review current practices to set a higher bar for a safe, encouraging workplace and governance culture. Identify and act to diffuse 'toxic' cultural norms (especially in leadership and law enforcement positions).
For Goal 4.1, be very cautious of what type of business you invite in. Big businesses make big promises \$\$\$\$\$. Do your research! Give the community a say. Think about environmental/social/political impact. Google for instance-a very poor fit for Idaho
get some jobs in the area that are more than minimum wage
goal 4.2 needs to be above 4.1, people first
Great statement, but don't feel like there is much being done. We're behind when it comes to promoting the areas relative to tourism, bragging rights to fishing places in the county.
Greenway Finished. Bike paths everywhere. More support for downtown businesses and property owners. Tidy up the roadways and edges. More parks everywhere.
I would like to see an effort to enhance the economic vitality of the south end of the county. Its a great place to live with hard working people. I believe that the county could create incentives for a more diverse economic base in the south end. For example, Rockland has direct communications located in their small town. It contributes positively to the economy yet doesn't detract from the small town.
It would also be helpful if you had words like through grants and Community loans.
It's important that we preserve and promote ag sustainability. Agriculture has a significant economic impact and we can lose it.
Just that the growth of the economy should reflect on the county as well, bringing in higher paying jobs means the county will loose personel as well to those jobs without a fair pay scale.
Keep it manageable and keep businesses out that do not represent a good quality of life and only want to shred our quality of life.
Let's market our natural resources - recreation and views!
Look into the development of small off-channel reservoirs to store runoff water for irrigation. Ag production is very important for the county, and as the climate changes our water supply will become more variable and unpredictable.
na
Need new businesses. Not another bar or eating place.

New businesses want their electricity from 100% renewable sources. This will attract younger folks to the area. Bannock County could consider making a 100% renewable energy goal by 2030. Governor Little says he wants our young people to stay; this would help them stay because it's forward thinking. Boise already has a goal. Moscow has a greenhouse gas reduction goal, Bannock County could have a goal.
Slow and steady responsible/positive growth
Sorry stated this answer in wrong section. Incentives to attract businesses here and in doing so hopefully people will shop local
Stop selling us a bill of goods like Hoku, Northgate and whatever is next. I think Pocatello needs to annex Chubbuck and combine our resources. No sense in recreating the wheel. We only have one direction to grow in our Valley and that is North.
Support diversity and natural living
Sustainable growth needs to include planned sewer extensions within the ACI and adjacent to the ACI and "proven water availability" within limited time periods. Learn the lessons of Johnny Creek, Mink Creek, South 5th and Chubbuck sprawl. Sewering plans must be completed within a set time period of incorporation in order to seek funding of this needed infrastructure before septic fail.
To have economic vitality we need to get rid of the good old boy mentality that seems to drive our area and truly drive to bring good business to our community
Transportation can be a real issue for limited income people living outside city limits.
Unless we Put Water First in the Comp Plan and finish the draft source water ordinance from the last comp plan, economic development and recreation will not reach its full sustainable potential.
work on code enforcement to clean-up properties
Work with others, Share the load. Don't make me pay for others development.
Yes stop just remodeling the courthouse over and over and make a new building that is built for future growth and needs.
Yes. We need jobs. manufacturing or tech jobs.

14. Do you have any other comments related to economic vitality that you would like to share with us?

Ag. lands as open space needs to be valued as important to the scenic vistas and visual resource management of tourism.
define how the development of skilled and talented workers will be supported
Good quality of life is one of the biggest draws for business. That has to be balanced with giving up resources (clean air, clean water, funds for community programs, etc) as potential incentives to attracting business to Bannock Co.
Improving water quality in Marsh Creek and the Portneuf River would be an economic plus for Pocatello and the County. Businesses are attracted to communities with healthy rivers and a variety of recreational opportunities for their employees.
Make a 100% renewable goal.
There is a real need for education of new rural residents of how to be a good neighbor. How to irrigate, keep control of pets and livestock and keep structures firewise.

15. Do you generally feel that the goal statements related to transportation (shown above) will help the County positively develop and maintain a local and regional transportation system?

Airport sucks. Not even in Bannock county
Because almost all actions in the county and city focus on promotion of personal vehicles. I don't see the will to change that.
Include ALL schools in the public transportation system- including Lincoln Center on Oakwood Drive.
Safety is ignored (i.e. safe guardrail design) makes multi-modal travel risky
some goals are not specific enough to promote action
Support of public transportation needs to be called out specifically.
The way public transportation is set up currently is that it not convenient to use. I attended Fourth of July concert this past Sunday and the only people in attendance were the ones with private transportation. I am sure that if convenient affordable public transportation was available more people would have been there. I like the fact that there is now a skate board area but how many young man and young women can afford to go there since few of them drive.
Then county needs to focus on maintaining the roads that it already has.
There is no need to support private airports, which will do nothing but create additional noise and carbon pollution.
There needs to be some mention of all fleets will be converted to electric vehicles over the next 10 years or something.
Vague. Sounds like a lot of lip service. Commissioners do not have good enough relationships with anyone (including their own employees) to make much of this happen.
We dont need much of this stuff in the rural areas it is to far to ride bikes etc.

16. Do you have any suggestions for actions or projects that you would like to see the County pursue related to transportation?

Road maintenance,
a good trail system would help with moving people
Access
An actual transportation plan would be beneficial.
Assess local bridges and culverts over perennial streams/rivers to identify any that impede recreation access or cause harm the rivers/streams/wetlands that they cross. Prioritize the list and work with partners to get them replaced.
Be specific, what percent change in walking or biking trails must be achieved in the next 5-10 years?
better and more accessible public transportation is needed
Big area of growth for our community. I know that transportation is really important in our rural community. I've never used the public transportation but I've been tempted. With the increasing fuel prices I just might but I love the convenience of my vehicle. I'm not sure about the private airports but I'm down for anything that helps our economy.
Bus system sucks
Could use a bus service for small communities like McCammon, Virginia, etc.
Encourage low-emission vehicles.
Generally the county roads are better than the city roads. They are better maintained in the winter months also.
Greenway plan for the County!
Get commuter train service back
If you follow the plan it will be a good thing
In Chubbuck there are over 8 lights in less than a mile. Stupid!! And who can't keep paint in the bucket!
Just keep adding bike paths where-ever possible.

look at merging the Downey Swanlake hwy district with the county road and bridge- so everything can be run on the same page
Make sure trails and transportation corridors are visually screened to protect the visual scenic vistas. A visual resource management plan is needed since Malad Pass north is the first impression of Idaho for many on I-15.
Manage to protect wildlife too (fencing, animal overpasses if needed, etc)
Not as many one way streets.
Only that a larger work force to maintain these expansions will be needed.
Remember there are transportation issues outside of Poc/Chub area that the county should be taking care of too..
Repair & maintain roads better.
Safer non-vehicular travel options
see answer number 4
See question number 15
Since Caterpillar makes frequent use of Highway 91 with WIDE loads, have them help maintain the road and widen it for bike lanes.
spending resources on airports is a waste. idaho falls airport will always be the choice for airlines and there is pretty much nothing that can be done to change that. private air travel is DOA due to fuel prices
The County needs to update their county road database for the southern third of the county. Needs to define exactly which roads will be maintained for public access and which roads should be private. The County has done a very poor job of maintaining access to public lands.
There needs to be some sort of commitment for going 100% renewable, recognizing that we are part of the solution to the climate crisis.
We need to be able to maintain our current roads before we add new ones. Walking and biking paths are important to the health of our community.
We should get those electric scooters!!! Bannock county could get them with ISU.
Would like to see Bannock County be leaders in using less energy with electric vehicles and use of solar on facilities.
Would like to see bus system in the county.
Yellowstone is getting very congested and traffic is backing up at lights. With any future growth, an alternate path across town will need to be created.

17. Do you have any other comments related to transportation that you would like to share with us?

- Support cycling on county roads. This needs support of the Road & Bridge crew! Shared and shoulder bike lanes need to be part of seasonal sweeping to keep them clear of sand and other debris. Design road striping to accommodate bike lanes whenever possible - and make sure when new striping is painted, that adequate bike lane widths are kept.
- Some county roads (like S 5th in Pocatello, Buckskin/Hootowl) are wildlife roadkill hotspots. PLEASE work with IDFG and transportation partners on solutions! Planning / development is important driver/part of solution as well.
.
Better guardrail implementation
Build an airport in Blackfoot for all southeast Idaho so we can get better direct flights.
I think developing clean small(uber like) on demand public transportation services is much more efficient than buses. I can't tell you how many times I see public buses completely empty
I'm not too certain about the support of private air transportation facilities. I don't believe it would be fair to a tax payer to support a wealthy person's hobby.

It would be really great if the County would promote the use of bicycles throughout. There could be bicycle repair stations there could be as I said before more trails, there could be electric scooters there could be electric bikes available for the public.
Make it cheap and convenient.
MORE bike lanes!! It's still dangerous to ride! More driver awareness - campaign for bicycle/ motorbike awareness. Make a goal of having the Bannock County fleet all electric by 2025. There is a grant for that: https://www.deq.idaho.gov/air-quality/vw-diesel-settlement/#Replacement
Multi modal transportation emphasis is a good beginning. We need to place an additional emphasis on public transportation. It is one of the key factors in reducing emissions and the wear and tear of our road system. We can only build out so much when it then is no longer effective or efficient.
Promote use of electric vehicles and energy savings for the County fleets.
The shoulders of highway 91 aren't being maintained very well. At the Portneuf Gap the gravel is eroded very badly. It hasn't been groomed for years. Also someone crashed into the guardrails under the bridge on the lane going north about 6 months ago and it's shocking to see it all torn up and no one repairing it!
Very nice statements, but please work on specific details and measurements.
Work with others (City's)

18. Do you generally feel that the goal statements related to public services (shown above) will help the County improve access to education, public facilities and the performance of public services?

6.3 - 6.5 are OK. The first two are not the job of County Government.
6.5 you don't have any mention of planning for future solar Farms or wind farms that should be included in this section.
Commissioners don't really think ahead enough to manage that kind of a plan.
Ensure that all of Bannock County is friendly for electric vehicle charging - more \$\$ spent in town.
From this question allow you show how much of a biased you have. I know for a fact its called the Pocatello/Chubbuck School District. Get your act together and treat everyone the same. Stop catering to Pocatello only. We all live in the County. Taxation without representation is wrong.
Full disclosure of all known and legacy contamination should be required of all real estate sales.
Goal 6.4: Ensure that the county is prepared to respond to emergency situations. How about helping develop a new fire district. How many of you have been attending the meetings where a new fire district is being developed? All the commissioners have been unusually silent on this issue. How is that for weaseling out of having to do something. How much are we paying you guys to weasel out of having to do real work? And how about that mayor? but that is another story.
I feel the increase in population in the cities, the annexations of the county lands, and the overall increase in population with all of Bannock County, we need to increase personnel at ALL levels of public services. Specifically the Sheriff's Office, Courthouse, and Road and Bridge.
Pretty vague - is there anything in 'consider, ensure, work, coordinate' that actually guides county actions toward quality practices / decisions ?
Renewable energy I.e. solar farms, wind farms are not mentioned.
School district 25 won't work with the County without drama. Election stations in schools and perceived school safety during elections and the stalemate that ensued is a clear indication that this objective is incredibly lofty.
Schooling needs a lot more priority as far as funding goes. Our education is ridiculously overlooked. We are getting dumber and dumber and the other countries are getting smarter and smarter.
Schools are horrible.
Tell the sheriff to stop being a baby and pulling programs just because he didn't get what he wanted!
The county should stick to worrying about its responsibility for landfills.

The schools in Southeast Idaho are lacking. That is across the board. How can schools in the same state or even in a state less than 100 miles away have better learning and sporting facility's than any school in bannock county?
Voting public is unaware of how behind local schools are
We have always done it this way will not preserve safety and promote life saving mechanisms.
We need a goal related to alternative energy sources. To promote, evaluate and support these sources to make us less dependent on fossil fuels.
what can the county do
You mention jails and other county services but the support of the County Commissioners is lacking for this and correct information supported by the community is lacking. If those looking at education do not believe they will be safe or well paid in vocations for these areas, they will look elsewhere. Put your money where your mouth is.

19. Do you have any suggestions for actions or projects that you would like to see the County pursue related to public services?

- Support expansion of mental/behavioral health services. Private-public partnerships may be part of the solution. Please get input from stakeholders - patients, patient families, providers, community orgs (SEICCA, Bannock House, etc), subject-matter experts, law enforcement - on needs and ideas. So many of incarcerated and addicted citizens are where they are due to mental illness.
- Participate in developing a Community Wildfire Response Plan for applicable areas (Portneuf Valley, Inkom, Lava Hot Springs, etc) with local, state, fed, private partners (different from county All Hazard Mitigation Plan). See Idaho Smart Growth Wildfire Planning webpg.
- Expand resources for law enforcement and corrections staff to receive substantive, quality training and/or experiential learning for improved support/response pertaining to minority, LGBTQ and mentally-ill citizens.
A merger of all south county fire departments into one district
Actively involve surrounding jurisdictions with table top exercises in the event of a major disaster in our region.
Again more public buy in for the whole not the privileged few
An entire attitude change about planning would have to occur for these goals to be productive.
Bannock County needs significant changes in how it views its public safety and management of disasters. Currently the system is broken due because of the "we have always done it this way" mentality.
Better internet access throughout the county at a reasonable cost.
Come up with ideas and money on how to develop and implement a fire department. Or are any of these needs in your vocabulary?
Consideration of using renewable (solar, turbines, etc.) sources of electrical energy for county-owned structures.
County needs to start developing renewable energy to both reduce their long-term costs and reduce their carbon footprint.
Electric charging stations are inexpensive and can be a public service as well as a way for the County to bring in funds.
Focus on getting a jail expansion/renovation completed to address the current overcrowding. It is not going to get better, only worse as Bannock County is projected to grow. This is something the County can be sued for by the ACLU and the US Department of Justice which will result in a consent decree that will cost the County thousands more as we will be forced to address and meet the requirements of the consent decree.
Get all in same level
Get the funding in the right place
Get the groundwater issue taken care of at the landfill.

Create opportunities for students to learn the local ecology and do projects that benefit the community.
INSTALL renewable energy SOLAR PANELS on public buildings to modernize and cut costs. Everywhere. We have more sunshine than most.
Has there been any talk about building a homeless encampment with pre fab houses?
I feel fire services need to be addressed for those residing in unincorporated areas
I might be the only one in Idaho that thinks school teachers have a great gig. They only work 1400+ hours per year and they are going to get paid \$40,000 in starting wage. That's \$28.00 an hour starting out and that is what I'm making after 20+ years in my field. I believe they need to be paid a good wage but that's ridiculous. Parity is needed. I guess I can quit whining and go be a teacher.
I would suggest a 5-10 year plan on how to increase personnel at all County Departments. Be proactive rather than reactive.
If you can't help all of us in the County maybe you should contract everything out to someone who can.
increased patrol enforcement in small rural areas. Hire more County Officers within Sheriff's Office.
Infrastructure. Drugs are a big problem here. Let's help the people with addiction problems that are sitting in jail . Not the dealers ect. Instead of just locking them up, let's plan a rehab center.
It is time to start planning to move the landfill out of the Lower Portneuf Aquifer sole drinking water source of over 80,000 people.
Lower taxes
Lower taxes!
New bigger and future growth sized building - courthouse and county services...
No public safety south of Pocatello. Meth houses everywhere
Promote and allow renewable energy production in the county
Protect schools
See previous comment. Again there can be grants to help people go solar, can companies to support solar businesses or just solar businesses, as well as training in becoming a solar technician or a wind technician. ISU College of Technology is ready to do this and this should be talked about in this section.
The resource officer at MV had been trying to put together an emergency drill that would included multiple county agencies. He has been met with lots of NO. I bet if district 25 wanted to do this, they'd get a different answer. All parts of our county need to be prepared.
think about coop solar plants that can reduce power needs
To start, people need to be paid a wage they can live on. Trained, educated, professionals are sorely underpaid-teachers being at the top of this list. Goals 6.1, 6.2 address training and education, but once trained, people will not stay in a community where they are not monetarily compensated for the time, money and effort expended to obtain their education. The most qualified people will leave for better offers.
While the sheriff is elected he still needs to be held accountable by the commissioners.
Would like to see sustainable energy such as wind and solar implemented.

20. Do you have any other comments related to public services that you would like to share with us?

Bannock County should automatically incorporate contaminant overlay updates and natural resource information from IDEQ. The County should be involved in local Portneuf Watershed Partnership to network and gain knowledge.
--

Early childhood education should be a priority. Are children are behind before they get started in school because of limited opportunities for pre school.
Equal training & funds
I don't feel that the employees are treated with respect and dignity. Everyone needs a job, everyone needs to feel needed. If you have employees that are not meeting standards maybe its your hiring practices.
Put our money to our schools
Renewable energy is a tremendous Economic Opportunity for southeast Idaho, Bannock County can be part of that development.
See comments above regarding how upkeep of current services are impacted as new services are added.
Since it's supposed to be free public education, why does it cost so much to register students for school?
Thank you for all the work you do with limited resources!
who will determine rural firefighting services?

